

- 1 Sistema di tenuta a doppio labbro
- 2 Anello interno, standard
- 3 Perni di bloccaggio
- 4 Anello di ancoraggio con dentatura conica stampata

NUOVO!
Ora disponibile
anche con
guarnizione di
tenuta FKM

NORMACONNECT®

NUOVO

Il giunto per tubi rigidi “antisfilamento”

I giunti per tubi NORMACONNECT® GRIP/GRIP E impediscono il movimento assiale e vengono utilizzati per collegare prevalentemente tubi metallici. L'anello di ancoraggio con dentatura conica stampata, fa presa sulla superficie del tubo (acciaio, acciaio inox o ghisa) e garantisce una resistenza sicura e stabile al movimento assiale. Grazie al design speciale il giunto è in grado di resistere anche a vibrazioni elevate.

Panoramica dei vantaggi

- L'effetto bloccante progressivo garantisce un collegamento esente da difetti e manutenzione
- Riutilizzabile
- Resistente agli urti
- Salvaspazio
- Resistente a vibrazioni elevate

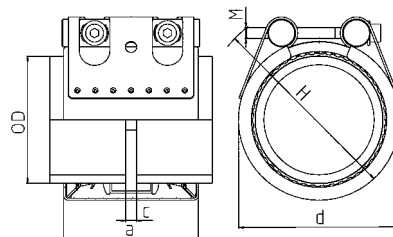
Informazioni

- Dimensioni: 26,9 mm - 812,8 mm
- Pressione di esercizio: 70,0 - 1 bar
- Materiale: AISI 304, AISI 316 Ti
- EPDM:
Dimensioni da 26,9 mm a 168,3 mm: da - 30 °C a + 125 °C
Dimensioni > 180,0 mm: da - 20 °C a + 80 °C
- NBR: da - 20 °C a + 80 °C
- FKM: da -10 °C a +150 °C (In alcuni casi sono possibili temperature più alte)

Materiali



W1	W2	W3	W4	W5
	x		x	x

Dati tecnici e informazioni per l'ordine



Dati tecnici e informazioni per l'ordine

NORMACONNECT® FGR GRIP

Ø (D.E.)	Descrizione	Campo di serraggio	PN ¹	WP ²	C max	Dimensioni (circa)			Peso (circa)	Bulloni di bloccaggio a brugola	
		DE min - DE max	 [bar]	 [bar]	(mm)	a (mm)	d (mm)	H (mm)	(kg/pz.)	Filettatura	Coppia di serraggio (Nm)
26,9	GRIP 26,9	26,4 - 27,5	16	70	3	67	50	70	0,39	M 8 SW 6	10
28,0	GRIP 28,0	27,5 - 28,5	16	70	3	67	50	70	0,39	M 8 SW 6	10
30,0	GRIP 30,0	29,5 - 30,6	16	70	3	67	50	70	0,39	M 8 SW 6	10
33,7	GRIP 33,7	33,0 - 34,3	16	60	3	67	55	75	0,40	M 8 SW 6	10
35,0	GRIP 35,0	34,5 - 35,6	16	60	8	63	55	75	0,55	M 8 SW 6	15
38,0	GRIP 38,0	37,5 - 38,6	16	60	8	63	60	80	0,55	M 8 SW 6	15
42,4	GRIP 42,4	41,7 - 43,0	16	50	8	63	65	85	0,56	M 8 SW 6	15
44,5	GRIP 44,5	44,0 - 45,1	16	50	8	63	65	85	0,57	M 8 SW 6	15
48,3	GRIP 48,3	47,6 - 50,5	16	50	8	63	70	90	0,59	M 8 SW 6	15
54,0	GRIP 54,0	53,3 - 54,6	16	50	17	78	75	95	0,77	M 8 SW 6	15
57,0	GRIP 57,0	56,3 - 57,7	16	50	17	78	80	100	0,77	M 8 SW 6	20
60,3	GRIP 60,3	59,5 - 61,0	16	40	17	78	85	105	0,78	M 8 SW 6	20
63,0	GRIP 63,0	62,2 - 63,9	16	40	17	78	85	105	0,78	M 8 SW 6	20
70,0	GRIP 70,0	69,0 - 71,0	16	40	25	98	90	110	1,38	M 10 SW 8	30
73,0	GRIP 73,0	72,1 - 73,8	16	40	25	98	95	115	1,40	M 10 SW 8	30
76,1	GRIP 76,1	75,2 - 77,0	16	35	25	98	100	120	1,40	M 10 SW 8	30
80,0	GRIP 80,0	79,0 - 80,8	16	35	25	98	100	120	1,44	M 10 SW 8	30
84,0	GRIP 84,0	83,0 - 85,0	16	35	25	98	105	125	1,46	M 10 SW 8	30
88,9	GRIP 88,9	87,0 - 89,9	16	35	25	98	110	130	1,48	M 10 SW 8	30
101,6	GRIP 101,6	100,4 - 102,8	16	35	25	98	125	145	1,62	M 10 SW 8	30
104,0	GRIP 104,0	102,8 - 106,1	16	35	25	98	125	145	1,63	M 10 SW 8	30
108,0	GRIP 108,0	106,8 - 109,2	16	35	25	98	130	150	1,66	M 10 SW 8	30
110,0	GRIP 110,0	108,8 - 111,4	16	35	25	98	130	150	1,71	M 10 SW 8	30
114,3	GRIP 114,3	113,0 - 115,5	16	35	25	98	135	155	1,71	M 10 SW 8	50
129,0	GRIP 129,0	127,6 - 131,1	16	32	35	115	155	185	3,06	M 12 SW 10	50
133,0	GRIP 133,0	131,5 - 134,4	16	32	35	115	160	190	3,16	M 12 SW 10	50
139,7	GRIP 139,7	138,1 - 141,6	16	32	35	115	165	195	3,27	M 12 SW 10	50
141,3	GRIP 141,3	139,6 - 142,8	16	32	35	115	170	200	3,27	M 12 SW 10	50
154,0	GRIP 154,0	152,3 - 156,1	16	32	35	115	180	210	3,39	M 12 SW 10	60
159,0	GRIP 159,0	157,3 - 160,7	16	32	35	115	185	215	3,51	M 12 SW 10	60
168,3	GRIP 168,3	166,5 - 170,1	16	32	35	115	195	225	3,57	M 12 SW 10	60
193,7	GRIP 193,7	192,0 - 196,0	16	32	35	142	225	255	6,8	M 16 SW 14	150
206,0	GRIP 206,0	202,0 - 208,0	16	32	35	142	240	270	7,0	M 16 SW 14	150
219,1	GRIP 219,1	216,0 - 221,0	16	32	35	142	250	280	7,3	M 16 SW 14	150
225,0	GRIP 225,0	222,0 - 227,0	13	26,5	35	142	255	285	7,4	M 16 SW 14	180
229,9	GRIP 229,9	228,0 - 232,0	13	26	35	142	260	290	7,5	M 16 SW 14	180
244,5	GRIP 244,5	242,0 - 247,0	12	24,5	35	142	275	305	7,7	M 16 SW 14	180
254,0	GRIP 254,0	250,0 - 256,0	11,5	22,5	35	142	285	315	7,9	M 16 SW 14	180
267,0	GRIP 267,0	264,0 - 269,0	11	22,5	35	142	300	330	8,2	M 16 SW 14	180
273,0	GRIP 273,0	270,0 - 275,0	11	22	35	142	305	335	8,3	M 16 SW 14	180
306,0	GRIP 306,0	302,0 - 308,0	9,5	19,5	35	142	340	370	8,9	M 16 SW 14	180
323,9	GRIP 323,9	320,0 - 327,0	6,5	13	35	142	355	385	9,2	M 16 SW 14	180
326,0	GRIP 326,0	322,0 - 329,0	6,5	13	35	142	360	390	9,3	M 16 SW 14	180
355,6	GRIP 355,6	352,0 - 359,0	6	12	35	142	390	420	9,8	M 16 SW 14	180
406,4	GRIP 406,4	402,0 - 410,0	4,5	9	35	142	440	470	10,8	M 16 SW 14	180
429,0	GRIP 429,0	426,0 - 431,0	4	8,5	35	142	460	490	11,3	M 16 SW 14	180
442,0	GRIP 442,0	439,0 - 444,0	4	8	35	142	475	505	11,5	M 16 SW 14	180
457,2	GRIP 457,2	454,0 - 459,0	4	8	35	142	490	520	11,8	M 16 SW 14	180
508,0	GRIP 508,0	505,0 - 510,0	2,5	5	35	142	540	570	12,7	M 16 SW 14	180
531,0	GRIP 531,0	528,0 - 534,0	2,5	5	35	142	565	595	13,2	M 16 SW 14	180
558,8	GRIP 558,8	556,0 - 562,0	2	4,5	35	142	590	620	13,7	M 16 SW 14	180
609,6	GRIP 609,6	606,0 - 613,0	1,5	3	35	142	640	670	14,7	M 16 SW 14	180
634,0	GRIP 634,0	631,0 - 637,0	1,5	3	35	142	665	695	15,1	M 16 SW 14	200
711,2	GRIP 711,2	707,0 - 715,0	1,5	2,5	35	142	745	775	16,6	M 16 Sw 14	200

PN¹ (Pressione Nominale) è la massima pressione di esercizio ammessa nella cantieristica navale, in base a un fattore di sicurezza ≥ 4 .

WP² è la massima pressione di esercizio nelle applicazioni industriali, con un fattore di sicurezza come da specifica NORMA.

Dati tecnici e informazioni per l'ordine

NORMACONNECT® FGR GRIP								
Ø (D.E.)	Descrizione	W2 Codice prodotto		W4 Codice prodotto		W5 Codice prodotto		
		EPDM	NBR	EPDM	NBR	EPDM	NBR	FKM
26,9	GRIP 26,9	0578 9100 026	0578 8400 026	0578 9200 026	0578 8500 026	0578 9300 026	0578 8600 026	
28,0	GRIP 28,0	0578 9100 028	0578 8400 028	0578 9200 028	0578 8500 028	0578 9300 028	0578 8600 028	
30,0	GRIP 30,0	0578 9100 030	0578 8400 030	0578 9200 030	0578 8500 030	0578 9300 030	0578 8600 030	
33,7	GRIP 33,7	0578 9100 033	0578 8400 033	0578 9200 033	0578 8500 033	0578 9300 033	0578 8600 033	0578 9900 033
35,0	GRIP 35,0	0578 9100 035	0578 8400 035	0578 9200 035	0578 8500 035	0578 9300 035	0578 8600 035	
38,0	GRIP 38,0	0578 9100 038	0578 8400 038	0578 9200 038	0578 8500 038	0578 9300 038	0578 8600 038	0578 9900 038
42,4	GRIP 42,4	0578 9100 042	0578 8400 042	0578 9200 042	0578 8500 042	0578 9300 042	0578 8600 042	0578 9900 042
44,5	GRIP 44,5	0578 9100 044	0578 8400 044	0578 9200 044	0578 8500 044	0578 9300 044	0578 8600 044	
48,3	GRIP 48,3	0578 9100 048	0578 8400 048	0578 9200 048	0578 8500 048	0578 9300 048	0578 8600 048	0578 9900 048
54,0	GRIP 54,0	0578 9100 054	0578 8400 054	0578 9200 054	0578 8500 054	0578 9300 054	0578 8600 054	
57,0	GRIP 57,0	0578 9100 057	0578 8400 057	0578 9200 057	0578 8500 057	0578 9300 057	0578 8600 057	0578 9900 057
60,3	GRIP 60,3	0578 9100 060	0578 8400 060	0578 9200 060	0578 8500 060	0578 9300 060	0578 8600 060	0578 9900 060
63,0	GRIP 63,0	0578 9100 063	0578 8400 063	0578 9200 063	0578 8500 063	0578 9300 063	0578 8600 063	0578 9900 063
70,0	GRIP 70,0	0578 9100 070	0578 8400 070	0578 9200 070	0578 8500 070	0578 9300 070	0578 8600 070	
73,0	GRIP 73,0	0578 9100 073	0578 8400 073	0578 9200 073	0578 8500 073	0578 9300 073	0578 8600 073	
76,1	GRIP 76,1	0578 9100 076	0578 8400 076	0578 9200 076	0578 8500 076	0578 9300 076	0578 8600 076	0578 9900 076
80,0	GRIP 80,0	0578 9100 080	0578 8400 080	0578 9200 080	0578 8500 080	0578 9300 080	0578 8600 080	
84,0	GRIP 84,0	0578 9100 084	0578 8400 084	0578 9200 084	0578 8500 084	0578 9300 084	0578 8600 084	
88,9	GRIP 88,9	0578 9100 088	0578 8400 088	0578 9200 088	0578 8500 088	0578 9300 088	0578 8600 088	0578 9900 088
101,6	GRIP 101,6	0578 9100 101	0578 8400 101	0578 9200 101	0578 8500 101	0578 9300 101	0578 8600 101	
104,0	GRIP 104,0	0578 9100 104	0578 8400 104	0578 9200 104	0578 8500 104	0578 9300 104	0578 8600 104	
108,0	GRIP 108,0	0578 9100 108	0578 8400 108	0578 9200 108	0578 8500 108	0578 9300 108	0578 8600 108	
110,0	GRIP 110,0	0578 9100 110	0578 8400 110	0578 9200 110	0578 8500 110	0578 9300 110	0578 8600 110	
114,3	GRIP 114,3	0578 9100 114	0578 8400 114	0578 9200 114	0578 8500 114	0578 9300 114	0578 8600 114	0578 9900 114
129,0	GRIP 129,0	0578 9100 129	0578 8400 129	0578 9200 129	0578 8500 129	0578 9300 129	0578 8600 129	0578 9900 129
133,0	GRIP 133,0	0578 9100 133	0578 8400 133	0578 9200 133	0578 8500 133	0578 9300 133	0578 8600 133	
139,7	GRIP 139,7	0578 9100 139	0578 8400 139	0578 9200 139	0578 8500 139	0578 9300 139	0578 8600 139	0578 9900 139
141,3	GRIP 141,3	0578 9100 141	0578 8400 141	0578 9200 141	0578 8500 141	0578 9300 141	0578 8600 141	
154,0	GRIP 154,0	0578 9100 154	0578 8400 154	0578 9200 154	0578 8500 154	0578 9300 154	0578 8600 154	
159,0	GRIP 159,0	0578 9100 159	0578 8400 159	0578 9200 159	0578 8500 159	0578 9300 159	0578 8600 159	
168,3	GRIP 168,3	0578 9100 168	0578 8400 168	0578 9200 168	0578 8500 168	0578 9300 168	0578 8600 168	0578 9900 168
193,7	GRIP 193,7	0577 8100 ...	0577 8400 ...	0577 8200 ...	0577 8500 ...	0577 8300 ...	0577 8600 ...	
206,0	GRIP 206,0	0577 8100 ...	0577 8400 ...	0577 8200 ...	0577 8500 ...	0577 8300 ...	0577 8600 ...	
219,1	GRIP 219,1	0577 8100 ...	0577 8400 ...	0577 8200 ...	0577 8500 ...	0577 8300 ...	0577 3600 ...	
225,0	GRIP 225,0	0577 8100 ...	0577 8400 ...	0577 8200 ...	0577 8500 ...	0577 8300 ...	0577 8600 ...	
229,9	GRIP 229,9	0577 8100 ...	0577 8400 ...	0577 8200 ...	0577 8500 ...	0577 8300 ...	0577 8600 ...	
244,5	GRIP 244,5	0577 8100 ...	0577 8400 ...	0577 8200 ...	0577 8500 ...	0577 8300 ...	0577 8600 ...	
254,0	GRIP 254,0	0577 8100 ...	0577 8400 ...	0577 8200 ...	0577 8500 ...	0577 8300 ...	0577 8600 ...	
267,0	GRIP 267,0	0577 8100 ...	0577 8400 ...	0577 8200 ...	0577 8500 ...	0577 8300 ...	0577 8600 ...	
273,0	GRIP 273,0	0577 8100 ...	0577 8400 ...	0577 8200 ...	0577 8500 ...	0577 8300 ...	0577 3600 ...	
306,0	GRIP 306,0	0577 8100 ...	0577 8400 ...	0577 8200 ...	0577 8500 ...	0577 8300 ...	0577 8600 ...	
323,9	GRIP 323,9	0577 8100 ...	0577 8400 ...	0577 8200 ...	0577 8500 ...	0577 8300 ...	0577 8600 ...	
326,0	GRIP 326,0	0577 8100 ...	0577 8400 ...	0577 8200 ...	0577 8500 ...	0577 8300 ...	0577 8600 ...	
355,6	GRIP 355,6	0577 8100 ...	0577 8400 ...	0577 8200 ...	0577 8500 ...	0577 8300 ...	0577 8600 ...	
406,4	GRIP 406,4	0577 8100 ...	0577 8400 ...	0577 8200 ...	0577 8500 ...	0577 8300 ...	0577 8600 ...	
429,0	GRIP 429,0	0577 8100 ...	0577 8400 ...	0577 8200 ...	0577 8500 ...	0577 8300 ...	0577 8600 ...	
442,0	GRIP 442,0	0577 8100 ...	0577 8400 ...	0577 8200 ...	0577 8500 ...	0577 8300 ...	0577 8600 ...	
457,2	GRIP 457,2	0577 8100 ...	0577 8400 ...	0577 8200 ...	0577 8500 ...	0577 8300 ...	0577 8600 ...	
508,0	GRIP 508,0	0577 8100 ...	0577 8400 ...	0577 8200 ...	0577 8500 ...	0577 8300 ...	0577 8600 ...	
531,0	GRIP 531,0	0577 8100 ...	0577 8400 ...	0577 8200 ...	0577 8500 ...	0577 8300 ...	0577 8600 ...	
558,8	GRIP 558,8	0577 8100 ...	0577 8400 ...	0577 8200 ...	0577 8500 ...	0577 8300 ...	0577 8600 ...	
609,6	GRIP 609,6	0577 8100 ...	0577 8400 ...	0577 8200 ...	0577 8500 ...	0577 8300 ...	0577 8600 ...	
634,0	GRIP 634,0	0577 8100 ...	0577 8400 ...	0577 8200 ...	0577 8500 ...	0577 8300 ...	0577 8600 ...	
711,2	GRIP 711,2	0577 8100 ...	0577 8400 ...	0577 8200 ...	0577 8500 ...	0577 8300 ...	0577 8600 ...	

... = Ø senza decimali in mm

GRIP E



I giunti per tubi NORMACONNECT® GRIP E impediscono il movimento assiale e vengono utilizzati per collegare tubi metallici rigidi.



Materiali

W2, W4, W5

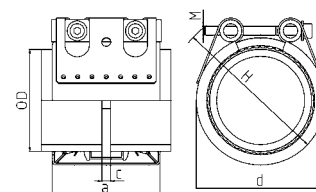
NORMACONNECT® FGR GRIP E

Ø (D.E.)	Descrizione	Campo di serraggio	PN ¹	WP ²	C max	Dimensioni (circa)			Peso (circa)	Bulloni di bloccaggio a brugola	
		DE min - DE max	 [bar]	 [bar]	(mm)	a (mm)	d (mm)	H (mm)	(kg/pz.)	Filettatura	Coppia di serraggio (Nm)
26,9	GRIP E 26,9	26,4 - 27,5	16	70	3	67	50	70	0,32	M 8 SW 6	10
28,0	GRIP E 28,0	27,5 - 28,5	16	70	3	67	50	70	0,32	M 8 SW 6	10
30,0	GRIP E 30,0	29,5 - 30,6	16	70	3	67	50	70	0,32	M 8 SW 6	10
33,7	GRIP E 33,7	33,0 - 34,3	16	60	3	67	55	75	0,33	M 8 SW 6	10
35,0	GRIP E 35,0	34,5 - 35,6	16	60	8	63	55	75	0,45	M 8 SW 6	15
38,0	GRIP E 38,0	37,5 - 38,6	16	60	8	63	60	80	0,45	M 8 SW 6	15
42,4	GRIP E 42,4	41,7 - 43,0	16	50	8	63	65	85	0,46	M 8 SW 6	15
44,5	GRIP E 44,5	44,0 - 45,1	16	50	8	63	65	85	0,47	M 8 SW 6	15
48,3	GRIP E 48,3	47,6 - 50,5	16	50	8	63	70	90	0,48	M 8 SW 6	15
54,0	GRIP E 54,0	53,3 - 54,6	16	50	17	78	75	95	0,62	M 8 SW 6	15
57,0	GRIP E 57,0	56,3 - 57,7	16	50	17	78	80	100	0,63	M 8 SW 6	20
60,3	GRIP E 60,3	59,5 - 61,0	16	40	17	78	85	105	0,64	M 8 SW 6	20
70,0	GRIP E 70,0	69,0 - 71,0	16	40	25	98	90	110	1,21	M 10 SW 8	30
73,0	GRIP E 73,0	72,1 - 73,8	16	40	25	98	95	115	1,23	M 10 SW 8	30
76,1	GRIP E 76,1	75,2 - 77,0	16	35	25	98	100	120	1,23	M 10 SW 8	30
80,0	GRIP E 80,0	79,0 - 80,8	16	35	25	98	100	120	1,27	M 10 SW 8	30
84,0	GRIP E 84,0	83,0 - 85,0	16	35	25	98	105	125	1,29	M 10 SW 8	30
88,9	GRIP E 88,9	87,0 - 89,9	16	35	25	98	110	130	1,31	M 10 SW 8	30
101,6	GRIP E 101,6	100,4 - 102,8	16	35	25	98	125	145	1,45	M 10 SW 8	30
104,0	GRIP E 104,0	102,8 - 106,1	16	35	25	98	125	145	1,46	M 10 SW 8	30
108,0	GRIP E 108,0	106,8 - 109,2	16	35	25	98	130	150	1,49	M 10 SW 8	30
110,0	GRIP E 110,0	108,8 - 111,4	16	35	25	98	130	150	1,54	M 10 SW 8	30
114,3	GRIP E 114,3	113,0 - 115,5	16	35	25	98	135	155	1,54	M 10 SW 8	50
129,0	GRIP E 129,0	127,6 - 131,1	16	32	35	115	155	185	2,83	M 12 SW 10	50
133,0	GRIP E 133,0	131,5 - 134,4	16	32	35	115	160	190	2,93	M 12 SW 10	50
139,7	GRIP E 139,7	138,1 - 141,6	16	32	35	115	165	195	3,04	M 12 SW 10	50
141,3	GRIP E 141,3	139,6 - 142,8	16	32	35	115	170	200	3,04	M 12 SW 10	50
154,0	GRIP E 154,0	152,3 - 156,1	16	32	35	115	180	210	3,17	M 12 SW 10	60
159,0	GRIP E 159,0	157,3 - 160,7	16	32	35	115	185	215	3,28	M 12 SW 10	60
168,3	GRIP E 168,3	166,5 - 170,1	16	32	35	115	195	225	3,35	M 12 SW 10	60
193,7	GRIP E 193,7	192,0 - 196,0	10	20	35	141	225	255	6,2	M 16 SW 14	100
206,0	GRIP E 206,0	202,0 - 208,0	10	20	35	141	240	270	6,5	M 16 SW 14	100
219,1	GRIP E 219,1	216,0 - 221,0	10	20	35	141	250	280	6,7	M 16 SW 14	100
225,0	GRIP E 225,0	222,0 - 227,0	10	16	35	140	255	285	6,2	M 16 SW 14	100
229,9	GRIP E 229,9	228,0 - 232,0	5,5	16	35	140	260	290	6,3	M 16 SW 14	100
244,5	GRIP E 244,5	242,0 - 247,0	5,5	15	35	140	275	305	6,5	M 16 SW 14	100
254,0	GRIP E 254,0	250,0 - 256,0	5,5	14	35	140	285	315	6,6	M 16 SW 14	100
267,0	GRIP E 267,0	264,0 - 269,0	5,5	13,5	35	140	300	330	6,8	M 16 SW 14	100
273,0	GRIP E 273,0	270,0 - 275,0	5,5	13	35	140	305	335	6,9	M 16 SW 14	100
306,0	GRIP E 306,0	302,0 - 308,0	5,5	10,5	35	140	340	370	7,4	M 16 SW 14	120
323,9	GRIP E 323,9	320,0 - 327,0	3	9,5	35	140	355	385	7,7	M 16 SW 14	120
326,0	GRIP E 326,0	322,0 - 329,0	3	9,5	35	140	360	390	7,7	M 16 SW 14	120
355,6	GRIP E 355,6	352,0 - 359,0	2,7	8,5	35	140	390	420	8,2	M 16 SW 14	120
406,4	GRIP E 406,4	402,0 - 410,0	2,5	7,0	35	140	440	470	8,9	M 16 SW 14	120
429,0	GRIP E 429,0	426,0 - 431,0	2,5	6,5	35	140	460	490	9,3	M 16 SW 14	120
442,0	GRIP E 442,0	439,0 - 444,0	2,5	6,5	35	140	475	505	9,5	M 16 SW 14	140
457,2	GRIP E 457,2	454,0 - 459,0	2,5	6,0	35	140	490	520	9,7	M 16 SW 14	140
508,0	GRIP E 508,0	505,0 - 510,0	2	4,0	35	140	540	570	10,5	M 16 SW 14	140
531,0	GRIP E 531,0	528,0 - 534,0	1,5	4,0	35	140	565	595	10,8	M 16 SW 14	140
558,8	GRIP E 558,8	556,0 - 562,0	1,5	3,5	35	140	590	620	11,3	M 16 SW 14	140
609,6	GRIP E 609,6	606,0 - 613,0	1	2,0	35	140	640	670	12,0	M 16 SW 14	140

PN¹ (Pressione Nominale) è la massima pressione di esercizio ammessa nella cantieristica navale, in base a un fattore di sicurezza ≥ 4 .

WP² è la massima pressione di esercizio nelle applicazioni industriali, con un fattore di sicurezza come da specifica NORMA.

Dati tecnici e informazioni per l'ordine



NORMACONNECT® FGR GRIP E							
Ø (D.E.)	Descrizione	W2 Codice prodotto		W4 Codice prodotto		W5 Codice prodotto	
		EPDM	NBR	EPDM	NBR	EPDM	NBR
26,9	GRIP E 26,9	0579 9100 026	0579 8400 026	0579 9200 026	0579 8500 026	0579 9300 026	0579 8600 026
28,0	GRIP E 28,0	0579 9100 028	0579 8400 028	0579 9200 028	0579 8500 028	0579 9300 028	0579 8600 028
30,0	GRIP E 30,0	0579 9100 030	0579 8400 030	0579 9200 030	0579 8500 030	0579 9300 030	0579 8600 030
33,7	GRIP E 33,7	0579 9100 033	0579 8400 033	0579 9200 033	0579 8500 033	0579 9300 033	0579 8600 033
35,0	GRIP E 35,0	0579 9100 035	0579 8400 035	0579 9200 035	0579 8500 035	0579 9300 035	0579 8600 035
38,0	GRIP E 38,0	0579 9100 038	0579 8400 038	0579 9200 038	0579 8500 038	0579 9300 038	0579 8600 038
42,4	GRIP E 42,4	0579 9100 042	0579 8400 042	0579 9200 042	0579 8500 042	0579 9300 042	0579 8600 042
44,5	GRIP E 44,5	0579 9100 044	0579 8400 044	0579 9200 044	0579 8500 044	0579 9300 044	0579 8600 044
48,3	GRIP E 48,3	0579 9100 048	0579 8400 048	0579 9200 048	0579 8500 048	0579 9300 048	0579 8600 048
54,0	GRIP E 54,0	0579 9100 054	0579 8400 054	0579 9200 054	0579 8500 054	0579 9300 054	0579 8600 054
57,0	GRIP E 57,0	0579 9100 057	0579 8400 057	0579 9200 057	0579 8500 057	0579 9300 057	0579 8600 057
60,3	GRIP E 60,3	0579 9100 060	0579 8400 060	0579 9200 060	0579 8500 060	0579 9300 060	0579 8600 060
70,0	GRIP E 70,0	0579 9100 070	0579 8400 070	0579 9200 070	0579 8500 070	0579 9300 070	0579 8600 070
73,0	GRIP E 73,0	0579 9100 073	0579 8400 073	0579 9200 073	0579 8500 073	0579 9300 073	0579 8600 073
76,1	GRIP E 76,1	0579 9100 076	0579 8400 076	0579 9200 076	0579 8500 076	0579 9300 076	0579 8600 076
80,0	GRIP E 80,0	0579 9100 080	0579 8400 080	0579 9200 080	0579 8500 080	0579 9300 080	0579 8600 080
84,0	GRIP E 84,0	0579 9100 084	0579 8400 084	0579 9200 084	0579 8500 084	0579 9300 084	0579 8600 084
88,9	GRIP E 88,9	0579 9100 088	0579 8400 088	0579 9200 088	0579 8500 088	0579 9300 088	0579 8600 088
101,6	GRIP E 101,6	0579 9100 101	0579 8400 101	0579 9200 101	0579 8500 101	0579 9300 101	0579 8600 101
104,0	GRIP E 104,0	0579 9100 104	0579 8400 104	0579 9200 104	0579 8500 104	0579 9300 104	0579 8600 104
108,0	GRIP E 108,0	0579 9100 108	0579 8400 108	0579 9200 108	0579 8500 108	0579 9300 108	0579 8600 108
110,0	GRIP E 110,0	0579 9100 110	0579 8400 110	0579 9200 110	0579 8500 110	0579 9300 110	0579 8600 110
114,3	GRIP E 114,3	0579 9100 114	0579 8400 114	0579 9200 114	0579 8500 114	0579 9300 114	0579 8600 114
129,0	GRIP E 129,0	0579 9100 129	0579 8400 129	0579 9200 129	0579 8500 129	0579 9300 129	0579 8600 129
133,0	GRIP E 133,0	0579 9100 133	0579 8400 133	0579 9200 133	0579 8500 133	0579 9300 133	0579 8600 133
139,7	GRIP E 139,7	0579 9100 139	0579 8400 139	0579 9200 139	0579 8500 139	0579 9300 139	0579 8600 139
141,3	GRIP E 141,3	0579 9100 141	0579 8400 141	0579 9200 141	0579 8500 141	0579 9300 141	0579 8600 141
154,0	GRIP E 154,0	0579 9100 154	0579 8400 154	0579 9200 154	0579 8500 154	0579 9300 154	0579 8600 154
159,0	GRIP E 159,0	0579 9100 159	0579 8400 159	0579 9200 159	0579 8500 159	0579 9300 159	0579 8600 159
168,3	GRIP E 168,3	0579 9100 168	0579 8400 168	0579 9200 168	0579 8500 168	0579 9300 168	0579 8600 168
193,7	GRIP E 193,7	0574 8100 ...	0574 8400 ...	0574 8200 ...	0574 8500 ...	0574 8300 ...	0574 8600 ...
206,0	GRIP E 206,0	0574 8100 ...	0574 8400 ...	0574 8200 ...	0574 8500 ...	0574 8300 ...	0574 8600 ...
219,1	GRIP E 219,1	0574 8100 ...	0574 8400 ...	0574 8200 ...	0574 8500 ...	0574 8300 ...	0574 8600 ...
225,0	GRIP E 225,0	0574 8100 ...	0574 8400 ...	0574 8200 ...	0574 8500 ...	0574 8300 ...	0574 8600 ...
229,9	GRIP E 229,9	0574 8100 ...	0574 8400 ...	0574 8200 ...	0574 8500 ...	0574 8300 ...	0574 8600 ...
244,5	GRIP E 244,5	0574 8100 ...	0574 8400 ...	0574 8200 ...	0574 8500 ...	0574 8300 ...	0574 8600 ...
254,0	GRIP E 254,0	0574 8100 ...	0574 8400 ...	0574 8200 ...	0574 8500 ...	0574 8300 ...	0574 8600 ...
267,0	GRIP E 267,0	0574 8100 ...	0574 8400 ...	0574 8200 ...	0574 8500 ...	0574 8300 ...	0574 8600 ...
273,0	GRIP E 273,0	0574 8100 ...	0574 8400 ...	0574 8200 ...	0574 8500 ...	0574 8300 ...	0574 8600 ...
306,0	GRIP E 306,0	0574 8100 ...	0574 8400 ...	0574 8200 ...	0574 8500 ...	0574 8300 ...	0574 8600 ...
323,9	GRIP E 323,9	0574 8100 ...	0574 8400 ...	0574 8200 ...	0574 8500 ...	0574 8300 ...	0574 8600 ...
326,0	GRIP E 326,0	0574 8100 ...	0574 8400 ...	0574 8200 ...	0574 8500 ...	0574 8300 ...	0574 8600 ...
355,6	GRIP E 355,6	0574 8100 ...	0574 8400 ...	0574 8200 ...	0574 8500 ...	0574 8300 ...	0574 8600 ...
406,4	GRIP E 406,4	0574 8100 ...	0574 8400 ...	0574 8200 ...	0574 8500 ...	0574 8300 ...	0574 8600 ...
429,0	GRIP E 429,0	0574 8100 ...	0574 8400 ...	0574 8200 ...	0574 8500 ...	0574 8300 ...	0574 8600 ...
442,0	GRIP E 442,0	0574 8100 ...	0574 8400 ...	0574 8200 ...	0574 8500 ...	0574 8300 ...	0574 8600 ...
457,2	GRIP E 457,2	0574 8100 ...	0574 8400 ...	0574 8200 ...	0574 8500 ...	0574 8300 ...	0574 8600 ...
508,0	GRIP E 508,0	0574 8100 ...	0574 8400 ...	0574 8200 ...	0574 8500 ...	0574 8300 ...	0574 8600 ...
531,0	GRIP E 531,0	0574 8100 ...	0574 8400 ...	0574 8200 ...	0574 8500 ...	0574 8300 ...	0574 8600 ...
558,8	GRIP E 558,8	0574 8100 ...	0574 8400 ...	0574 8200 ...	0574 8500 ...	0574 8300 ...	0574 8600 ...
609,6	GRIP E 609,6	0574 8100 ...	0574 8400 ...	0574 8200 ...	0574 8500 ...	0574 8300 ...	0574 8600 ...

... = Ø senza decimali in mm