

# NORMAFIX<sup>®</sup> Reinforced Pipe Clamp



**Reinforced Pipe Clamp enables pipes to be attached to walls quickly and easily**

✓ Full range 17–1,250 mm pipe diameter

✓ Captive side screws remain in place during clamp and pipe installation

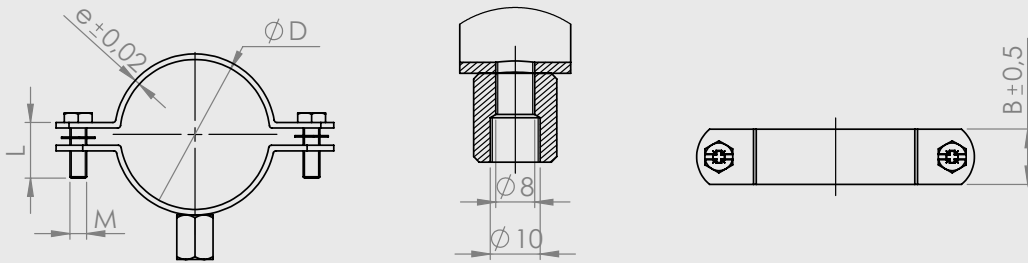
✓ Dual terminal nut for both M8 and M10 screw

## PIPE SUPPORT SYSTEMS

Applications	Material	
The NORMAFIX® Reinforced Pipe Clamp fixes pipes of different diameters to building structures such as walls and ceilings. The pipe clamp consists of two halves, where one half has a dual terminal nut suitable for M8 and M10 screws, for wall/ceiling mounting. The other half secures the pipe in place.	<b>Group</b>	W1 (galvanized), W4 (AISI 304), W5 (AISI 316)
	<b>Temperature</b>	-40 °C to +110 °C
	<b>Maximum Load Recommended</b>	80–200 kg (785 – 2,500 N)

Description	Measure				Material Quality	Loading Capacity (vertical connection)		Loading Capacity (lateral connection)	Article Number	Packaging Quantity (pcs)	
	∅ (D) (mm)	Clamping Range (mm)	Band B × e (mm)	Screw M × l (mm)		System Failure (min)	Recommended Load (max)	System Failure (min)			
W1											
Pipe Clamp M8+M10/18 W1	18	17-20	20×2		M6×20	W1	5,500Nm	2,500N	1,500N	0893 7111 018	50
Pipe Clamp M8+M10/22 W1	22	20-25	20×2				5,500Nm	2,500N	1,500N	0893 7111 022	50
Pipe Clamp M8+M10/28 W1	28	26-32	20×2				5,500Nm	2,500N	1,500N	0893 7111 028	50
Pipe Clamp M8+M10/35 W1	35	33-38	20×2				5,500Nm	2,500N	1,500N	0893 7111 035	50
Pipe Clamp M8+M10/40 W1	40	38-43	20×2				5,500Nm	2,500N	900N	0893 7111 040	50
Pipe Clamp M8+M10/48 W1	48	48-53	20×2				5,500Nm	2,500N	900N	0893 7111 048	50
Pipe Clamp M8+M10/54 W1	54	52-57	20×2				5,500Nm	2,500N	900N	0893 7111 054	50
Pipe Clamp M8+M10/60 W1	60	60-63	20×2				5,500Nm	2,500N	900N	0893 7111 060	50
Pipe Clamp M8+M10/70 W1	70	68-74	20×2				5,500Nm	2,500N	900N	0893 7111 070	50
Pipe Clamp M8+M10/75 W1	75	74-80	20×2				5,500Nm	2,500N	900N	0893 7111 075	50
Pipe Clamp M8+M10/84 W1	84	81-84	20×2				5,500Nm	2,500N	900N	0893 7111 084	25
Pipe Clamp M8+M10/90 W1	90	87-93	20×2				5,500Nm	2,500N	900N	0893 7111 090	25
Pipe Clamp M8+M10/100 W1	100	96-100	20×2		5,500Nm	2,500N	900N	0893 7111 100	25		
Pipe Clamp M8+M10/110 W1	110	107-112	20×2		M6×25	W1	5,500Nm	2,500N	900N	0893 7111 110	25
Pipe Clamp M8+M10/115 W1	115	109-115	20×2				5,500Nm	2,500N	700N	0893 7111 115	25
Pipe Clamp M8+M10/125 W1	125	125-131	20×2				5,500Nm	2,500N	700N	0893 7111 125	25
Pipe Clamp M8+M10/140 W1	140	138-144	20×2				5,500Nm	2,500N	700N	0893 7111 140	25
Pipe Clamp M8+M10/150 W1	150	149-160	20×2				5,500Nm	2,500N	700N	0893 7111 150	25
Pipe Clamp M8+M10/160 W1	160	158-165	20×2				5,500Nm	2,500N	700N	0893 7111 160	25
Pipe Clamp M8+M10/180 W1	180	179-185	20×2				5,500Nm	2,500N	700N	0893 7111 180	25
Pipe Clamp M8+M10/200 W1	200	199-206	28×2				5,500Nm	2,500N	700N	0893 7111 200	25
Pipe Clamp M8+M10/220 W1	220	215-220	28×2				5,500Nm	2,500N	700N	0893 7111 220	25
Pipe Clamp M8+M10/225 W1	225	218-230	28×2				5,500Nm	2,500N	700N	0893 7111 225	25
Pipe Clamp M8+M10/250 W1	250	248-255	28×2				5,500Nm	2,500N		0893 7111 250	25
Pipe Clamp M8+M10/280 W1	280	279-284	28×2				5,500Nm	2,500N		0893 7111 280	25
Pipe Clamp M8+M10/300 W1	300	300-311	28×2		5,500Nm	2,500N		0893 7111 300	25		
Pipe Clamp M8+M10/315 W1	315	314-319	28×2		5,500Nm	2,500N		0893 7111 315	25		
Pipe Clamp M8+M10/350 W1	350	348-355	28×2		5,500Nm	2,500N		0893 7111 350	25		
Pipe Clamp M8+M10/400 W1	400	398-410	28×2		5,500Nm	2,500N		0893 7111 400	25		
Pipe Clamp M8+M10/450 W1	450	447-458	28×2		5,500Nm	2,500N		0893 7111 450	25		
Pipe Clamp M8+M10/500 W1	500	499-506	28×2		5,500Nm	2,500N		0893 7111 500	25		
Pipe Clamp M8+M10/560 W1	560	559-568	28×2.5		M6×30	W1	5,500Nm	2,500N		0893 7111 560	25
Pipe Clamp M8+M10/600 W1	600	599-608	28×2.5				5,500Nm	2,500N		0893 7111 600	25
Pipe Clamp M8+M10/630 W1	630	629-636	28×2.5				5,500Nm	2,500N		0893 7111 630	25
Pipe Clamp M8+M10/650 W1	650	649-656	28×2.5				5,500Nm	2,500N		0893 7111 650	25
Pipe Clamp M8+M10/700 W1	700	699-706	28×2.5				5,500Nm	2,500N		0893 7111 700	25
Pipe Clamp M8+M10/800 W1	800	799-806	28×2.5				5,500Nm	2,500N		0893 7111 800	25
Pipe Clamp M8+M10/900 W1	900	899-906	28×2.5				5,500Nm	2,500N		0893 7111 900	25
Pipe Clamp M8+M10/1,000 W1	1,000	999-1,006	28×2.5				5,500Nm	2,500N		0893 7111 901	25
Pipe Clamp M8+M10/1,100 W1	1,100	1,099-1,106	28×2.5				5,500Nm	2,500N		0893 7111 902	25
Pipe Clamp M8+M10/1,200 W1	1,200	1,199-1,206	28×2.5				5,500Nm	2,500N		0893 7111 903	25
Pipe Clamp M8+M10/1,250 W1	1,250	1,249-1,256	28×2.5				5,500Nm	2,500N		0893 7111 904	25

### NORMAFIX® Reinforced Pipe Clamp



W4												
Pipe Clamp M8+M10/18 W4	18	16-20	20x2	M6x20	W4	5,500Nm	2,500N	1,500N	0893 7114 018	50		
Pipe Clamp M8+M10/22 W4	22	20-25	20x2			5,500Nm	2,500N	1,500N	0893 7114 022	50		
Pipe Clamp M8+M10/28 W4	28	26-31	20x2			5,500Nm	2,500N	1,500N	0893 7114 028	50		
Pipe Clamp M8+M10/35 W4	35	31-36	20x2			5,500Nm	2,500N	1,500N	0893 7114 035	50		
Pipe Clamp M8+M10/40 W4	40	38-44	20x2			5,500Nm	2,500N	900N	0893 7114 040	50		
Pipe Clamp M8+M10/48 W4	48	45-51	20x2			5,500Nm	2,500N	900N	0893 7114 048	50		
Pipe Clamp M8+M10/54 W4	54	52-57	20x2			5,500Nm	2,500N	900N	0893 7114 054	50		
Pipe Clamp M8+M10/60 W4	60	57-63	20x2			5,500Nm	2,500N	900N	0893 7114 060	50		
Pipe Clamp M8+M10/70 W4	70	69-73	20x2			5,500Nm	2,500N	900N	0893 7114 070	50		
Pipe Clamp M8+M10/75 W4	75	73-77	20x2			5,500Nm	2,500N	900N	0893 7114 075	50		
Pipe Clamp M8+M10/84 W4	84	83-86	20x2			5,500Nm	2,500N	900N	0893 7114 084	25		
Pipe Clamp M8+M10/90 W4	90	87-94	20x2			5,500Nm	2,500N	900N	0893 7114 090	25		
Pipe Clamp M8+M10/104 W4	104	103-110	20x2	5,500Nm	2,500N	900N	0893 7114 104	25				
Pipe Clamp M8+M10/110 W4	110	107-114	20x2	M6x25	W4	5,500Nm	2,500N	900N	0893 7114 110	25		
Pipe Clamp M8+M10/115 W4	115	110-118	20x2			5,500Nm	2,500N	700N	0893 7114 115	25		
Pipe Clamp M8+M10/125 W4	125	123-131	20x2			5,500Nm	2,500N	700N	0893 7114 125	25		
Pipe Clamp M8+M10/133 W4	133	131-135	20x2			5,500Nm	2,500N	700N	0893 7114 133	25		
Pipe Clamp M8+M10/140 W4	140	136-145	20x2			5,500Nm	2,500N	700N	0893 7114 140	25		
Pipe Clamp M8+M10/150 W4	150	147-155	20x2			5,500Nm	2,500N	700N	0893 7114 150	25		
Pipe Clamp M8+M10/160 W4	160	158-164	20x2			5,500Nm	2,500N	700N	0893 7114 160	25		
Pipe Clamp M8+M10/180 W4	180	178-184	20x2			5,500Nm	2,500N	700N	0893 7114 180	25		
Pipe Clamp M8+M10/204 W4	204	200-206	28x2			5,500Nm	2,500N	700N	0893 7114 204	25		
Pipe Clamp M8+M10/220 W4	220	216-226	28x2			M6x30	W4	5,500Nm	2,500N	700N	0893 7114 220	25
Pipe Clamp M8+M10/225 W4	225	223-227	28x2					5,500Nm	2,500N	700N	0893 7114 225	25
Pipe Clamp M8+M10/250 W4	250	249-256	28x2					5,500Nm	2,500N	700N	0893 7114 250	25
Pipe Clamp M8+M10/280 W4	280	279-285	28x2	5,500Nm	2,500N				0893 7114 280	25		
Pipe Clamp M8+M10/300 W4	300	300-307	28x2	5,500Nm	2,500N				0893 7114 300	25		
Pipe Clamp M8+M10/315 W4	315	314-321	28x2	5,500Nm	2,500N				0893 7114 315	25		
Pipe Clamp M8+M10/350 W4	350	350-359	28x2	5,500Nm	2,500N				0893 7114 350	25		
Pipe Clamp M8+M10/400 W4	400	398-408	28x2	5,500Nm	2,500N				0893 7114 400	25		
Pipe Clamp M8+M10/500 W4	500	499-505	28x2	5,500Nm	2,500N				0893 7114 500	25		
W5												
Pipe Clamp M8+M10/18 W5	18	16-20	20x2	M6x20	W5			5,500Nm	2,500N	1,500N	0893 7115 018	50
Pipe Clamp M8+M10/22 W5	22	20-25	20x2					5,500Nm	2,500N	1,500N	0893 7115 022	50
Pipe Clamp M8+M10/28 W5	28	26-31	20x2			5,500Nm	2,500N	1,500N	0893 7115 028	50		
Pipe Clamp M8+M10/35 W5	35	31-36	20x2			5,500Nm	2,500N	1,500N	0893 7115 035	50		
Pipe Clamp M8+M10/40 W5	40	38-44	20x2			5,500Nm	2,500N	900N	0893 7115 040	50		
Pipe Clamp M8+M10/48 W5	48	45-51	20x2			5,500Nm	2,500N	900N	0893 7115 048	50		
Pipe Clamp M8+M10/54 W5	54	52-57	20x2			5,500Nm	2,500N	900N	0893 7115 054	50		
Pipe Clamp M8+M10/60 W5	60	57-63	20x2			5,500Nm	2,500N	900N	0893 7115 060	50		
Pipe Clamp M8+M10/70 W5	70	69-73	20x2			5,500Nm	2,500N	900N	0893 7115 070	50		

W5												
Pipe Clamp M8+M10/75 W5	75	73-77	20x2	M6x20	W5	5,500Nm	2,500N	900N	0893 7115 075	50		
Pipe Clamp M8+M10/84 W5	84	83-86	20x2			5,500Nm	2,500N	900N	0893 7115 084	25		
Pipe Clamp M8+M10/90 W5	90	87-94	20x2			5,500Nm	2,500N	900N	0893 7115 090	25		
Pipe Clamp M8+M10/100 W5	100	97-104	20x2			5,500Nm	2,500N	900N	0893 7115 100	25		
Pipe Clamp M8+M10/110 W5	110	104-114	20x2			5,500Nm	2,500N	900N	0893 7115 110	25		
Pipe Clamp M8+M10/115 W5	115	110-118	20x2	M6x25	W5	5,500Nm	2,500N	700N	0893 7115 115	25		
Pipe Clamp M8+M10/125 W5	125	123-131	20x2			5,500Nm	2,500N	700N	0893 7115 125	25		
Pipe Clamp M8+M10/133 W5	133	131-135	20x2			5,500Nm	2,500N	700N	0893 7115 133	25		
Pipe Clamp M8+M10/140 W5	140	136-145	20x2			5,500Nm	2,500N	700N	0893 7115 140	25		
Pipe Clamp M8+M10/150 W5	150	147-155	20x2			5,500Nm	2,500N	700N	0893 7115 150	25		
Pipe Clamp M8+M10/160 W5	160	158-164	20x2			5,500Nm	2,500N	700N	0893 7115 160	25		
Pipe Clamp M8+M10/180 W5	180	178-184	20x2			5,500Nm	2,500N	700N	0893 7115 180	25		
Pipe Clamp M8+M10/204 W5	204	200-206	28x2			5,500Nm	2,500N	700N	0893 7115 204	25		
Pipe Clamp M8+M10/220 W5	220	216-226	28x2			M6x30	W5	5,500Nm	2,500N	700N	0893 7115 220	25
Pipe Clamp M8+M10/225 W5	225	223-227	28x2					5,500Nm	2,500N	700N	0893 7115 225	25
Pipe Clamp M8+M10/250 W5	250	249-256	28x2	5,500Nm	2,500N			700N	0893 7115 250	25		
Pipe Clamp M8+M10/280 W5	280	279-285	28x2	5,500Nm	2,500N			700N	0893 7115 280	25		
Pipe Clamp M8+M10/300 W5	300	300-307	28x2	5,500Nm	2,500N			700N	0893 7115 300	25		
Pipe Clamp M8+M10/315 W5	315	314-321	28x2	5,500Nm	2,500N			700N	0893 7115 315	25		
Pipe Clamp M8+M10/350 W5	350	350-359	28x2	5,500Nm	2,500N			700N	0893 7115 350	25		
Pipe Clamp M8+M10/400 W5	400	398-408	28x2	5,500Nm	2,500N			700N	0893 7115 400	25		
Pipe Clamp M8+M10/500 W5	500	499-505	28x2	5,500Nm	2,500N			700N	0893 7115 500	25		

Clamp Screws					
	Description	Screw	Material Quality	Article Number	Packaging Quantity
	Screw for Clamp M8x40/W1	M8x40	W1	0893 7101 084	100
	Screw for Clamp M8x60/W1	M8x60	W1	0893 7101 086	100
	Screw for Clamp M8x80/W1	M8x80	W1	0893 7101 088	100
	Screw for Clamp M10x50/W1	M10x50	W1	0893 7101 105	100
	Screw for Clamp M10x70/W1	M10x70	W1	0893 7101 107	100
	Screw for Clamp M8x50/W4	M8x50	W4	0893 7104 085	100
	Screw for Clamp M8x60/W4	M8x60	W4	0893 7104 086	100

Base With Nut					
	Description	Nut	Material Quality	Article Number	Packaging Quantity
	Rectangular Base with Nut M8+M10/W5	M8+M10	W5	0893 7115 001	1

**NORMAFIX® Reinforced Pipe Clamp is part of a broad portfolio. Discover more!**

**More Benefits**

- ✓ Secure clamping mechanism for stable grip



NORMAFIX® Isophonic Pipe Clamp



NORMAFIX® U-Bolt Clamp

**Do you have questions or require a personal consultation?**  
 Feel free to contact our NORMA Team!  
 Visit our website for more information about our products: [norma-connects.com](http://norma-connects.com)

