

- 1 Zwei-Lippen-Dichtsystem
- 2 Serienmäßige Bandeinlage
- 3 Verschlussbolzen
- 4 Verankerungsring mit konisch gestanzten Zähnen

Jetzt auch mit FKM-Dichtmanschette erhältlich

NORMACONNECT®
NEU

Die starke Rohrkupplung

NORMACONNECT® GRIP/GRIP E sind axial zugfeste Rohrkupplungen zum Verbinden von Metallrohren. Der Verankerungsring greift mit seinen konisch gestanzten Zähnen in jede Rohroberfläche (Stahl, Edelstahl oder Gusseisen) und sorgt für sichere und starke axiale Zugfestigkeit.

Aufgrund der besonderen Konstruktion kann die Kupplung auch starken Vibrationen standhalten.

Vorteile auf einen Blick

- Anhaltender Verschlusseffekt sorgt für eine störungs- und wartungsfreie Verbindung
- Wiederverwendbar
- Stoßfest
- Raumsparender Verbinder
- Hält starken Vibrationen stand

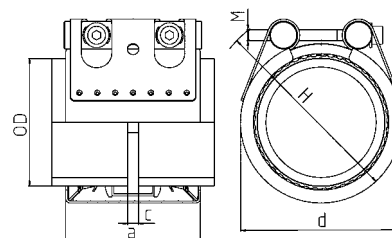
Informationen

- Größen: 26,9 mm - 812,8 mm
- Arbeitsdruck: 70,0 - 1 bar
- Material: W2, W4, W5
- EPDM:
Größen von 26,9 mm bis 168,3 mm: - 30 °C bis + 125 °C
Größen > 180,0 mm: von - 20 °C bis + 80 °C
- NBR: von - 20 °C bis + 80 °C
- FKM: -10 °C bis + 150 °C (höhere Temperaturen in bestimmten Fällen möglich)

Werkstoffe



| W1 | W2 | W3 | W4 | W5 |
|----|----|----|----|----|
| | x | | x | x |

Technische Daten und Bestellhinweise



Technische Daten und Bestellhinweise

NORMACONNECT® FGR GRIP

| Ø RA (mm) | Bezeichnung | Spannbereiche | PN ¹ | WP ² | C max | Abmessungen (ca.) | | | Gewicht (ca.) | Innensechskant-Verschlussbolzen | |
|--------------|-------------|----------------------|--|--|----------|-------------------|-----------|-----------|------------------|---------------------------------|--------------------------|
| | | RAmin - RMax (mm) |  [bar] |  [bar] | (mm) | a (mm) | d (mm) | H (mm) | (kg/Stk.) | Gewinde | Anzugsdrehmoment (Nm) |
| 26,9 | GRIP 26,9 | 26,4 - 27,5 | 16 | 70 | 3 | 67 | 50 | 70 | 0,39 | M 8 SW 6 | 10 |
| 28,0 | GRIP 28,0 | 27,5 - 28,5 | 16 | 70 | 3 | 67 | 50 | 70 | 0,39 | M 8 SW 6 | 10 |
| 30,0 | GRIP 30,0 | 29,5 - 30,6 | 16 | 70 | 3 | 67 | 50 | 70 | 0,39 | M 8 SW 6 | 10 |
| 33,7 | GRIP 33,7 | 33,0 - 34,3 | 16 | 60 | 3 | 67 | 55 | 75 | 0,40 | M 8 SW 6 | 10 |
| 35,0 | GRIP 35,0 | 34,5 - 35,6 | 16 | 60 | 8 | 63 | 55 | 75 | 0,55 | M 8 SW 6 | 15 |
| 38,0 | GRIP 38,0 | 37,5 - 38,6 | 16 | 60 | 8 | 63 | 60 | 80 | 0,55 | M 8 SW 6 | 15 |
| 42,4 | GRIP 42,4 | 41,7 - 43,0 | 16 | 50 | 8 | 63 | 65 | 85 | 0,56 | M 8 SW 6 | 15 |
| 44,5 | GRIP 44,5 | 44,0 - 45,1 | 16 | 50 | 8 | 63 | 65 | 85 | 0,57 | M 8 SW 6 | 15 |
| 48,3 | GRIP 48,3 | 47,6 - 50,5 | 16 | 50 | 8 | 63 | 70 | 90 | 0,59 | M 8 SW 6 | 15 |
| 54,0 | GRIP 54,0 | 53,3 - 54,6 | 16 | 50 | 17 | 78 | 75 | 95 | 0,77 | M 8 SW 6 | 15 |
| 57,0 | GRIP 57,0 | 56,3 - 57,7 | 16 | 50 | 17 | 78 | 80 | 100 | 0,77 | M 8 SW 6 | 20 |
| 60,3 | GRIP 60,3 | 59,5 - 61,0 | 16 | 40 | 17 | 78 | 85 | 105 | 0,78 | M 8 SW 6 | 20 |
| 63,0 | GRIP 63,0 | 62,2 - 63,9 | 16 | 40 | 17 | 78 | 85 | 105 | 0,78 | M 8 SW 6 | 20 |
| 70,0 | GRIP 70,0 | 69,0 - 71,0 | 16 | 40 | 25 | 98 | 90 | 110 | 1,38 | M 10 SW 8 | 30 |
| 73,0 | GRIP 73,0 | 72,1 - 73,8 | 16 | 40 | 25 | 98 | 95 | 115 | 1,40 | M 10 SW 8 | 30 |
| 76,1 | GRIP 76,1 | 75,2 - 77,0 | 16 | 35 | 25 | 98 | 100 | 120 | 1,40 | M 10 SW 8 | 30 |
| 80,0 | GRIP 80,0 | 79,0 - 80,8 | 16 | 35 | 25 | 98 | 100 | 120 | 1,44 | M 10 SW 8 | 30 |
| 84,0 | GRIP 84,0 | 83,0 - 85,0 | 16 | 35 | 25 | 98 | 105 | 125 | 1,46 | M 10 SW 8 | 30 |
| 88,9 | GRIP 88,9 | 87,0 - 89,9 | 16 | 35 | 25 | 98 | 110 | 130 | 1,48 | M 10 SW 8 | 30 |
| 101,6 | GRIP 101,6 | 100,4 - 102,8 | 16 | 35 | 25 | 98 | 125 | 145 | 1,62 | M 10 SW 8 | 30 |
| 104,0 | GRIP 104,0 | 102,8 - 106,1 | 16 | 35 | 25 | 98 | 125 | 145 | 1,63 | M 10 SW 8 | 30 |
| 108,0 | GRIP 108,0 | 106,8 - 109,2 | 16 | 35 | 25 | 98 | 130 | 150 | 1,66 | M 10 SW 8 | 30 |
| 110,0 | GRIP 110,0 | 108,8 - 111,4 | 16 | 35 | 25 | 98 | 130 | 150 | 1,71 | M 10 SW 8 | 30 |
| 114,3 | GRIP 114,3 | 113,0 - 115,5 | 16 | 35 | 25 | 98 | 135 | 155 | 1,71 | M 10 SW 8 | 50 |
| 129,0 | GRIP 129,0 | 127,6 - 131,1 | 16 | 32 | 35 | 115 | 155 | 185 | 3,06 | M 12 SW 10 | 50 |
| 133,0 | GRIP 133,0 | 131,5 - 134,4 | 16 | 32 | 35 | 115 | 160 | 190 | 3,16 | M 12 SW 10 | 50 |
| 139,7 | GRIP 139,7 | 138,1 - 141,6 | 16 | 32 | 35 | 115 | 165 | 195 | 3,27 | M 12 SW 10 | 50 |
| 141,3 | GRIP 141,3 | 139,6 - 142,8 | 16 | 32 | 35 | 115 | 170 | 200 | 3,27 | M 12 SW 10 | 50 |
| 154,0 | GRIP 154,0 | 152,3 - 156,1 | 16 | 32 | 35 | 115 | 180 | 210 | 3,39 | M 12 SW 10 | 60 |
| 159,0 | GRIP 159,0 | 157,3 - 160,7 | 16 | 32 | 35 | 115 | 185 | 215 | 3,51 | M 12 SW 10 | 60 |
| 168,3 | GRIP 168,3 | 166,5 - 170,1 | 16 | 32 | 35 | 115 | 195 | 225 | 3,57 | M 12 SW 10 | 60 |
| 193,7 | GRIP 193,7 | 192,0 - 196,0 | 16 | 32 | 35 | 142 | 225 | 255 | 6,8 | M 16 SW 14 | 150 |
| 206,0 | GRIP 206,0 | 202,0 - 208,0 | 16 | 32 | 35 | 142 | 240 | 270 | 7,0 | M 16 SW 14 | 150 |
| 219,1 | GRIP 219,1 | 216,0 - 221,0 | 16 | 32 | 35 | 142 | 250 | 280 | 7,3 | M 16 SW 14 | 150 |
| 225,0 | GRIP 225,0 | 222,0 - 227,0 | 13 | 26,5 | 35 | 142 | 255 | 285 | 7,4 | M 16 SW 14 | 180 |
| 229,9 | GRIP 229,9 | 228,0 - 232,0 | 13 | 26 | 35 | 142 | 260 | 290 | 7,5 | M 16 SW 14 | 180 |
| 244,5 | GRIP 244,5 | 242,0 - 247,0 | 12 | 24,5 | 35 | 142 | 275 | 305 | 7,7 | M 16 SW 14 | 180 |
| 254,0 | GRIP 254,0 | 250,0 - 256,0 | 11,5 | 22,5 | 35 | 142 | 285 | 315 | 7,9 | M 16 SW 14 | 180 |
| 267,0 | GRIP 267,0 | 264,0 - 269,0 | 11 | 22,5 | 35 | 142 | 300 | 330 | 8,2 | M 16 SW 14 | 180 |
| 273,0 | GRIP 273,0 | 270,0 - 275,0 | 11 | 22 | 35 | 142 | 305 | 335 | 8,3 | M 16 SW 14 | 180 |
| 306,0 | GRIP 306,0 | 302,0 - 308,0 | 9,5 | 19,5 | 35 | 142 | 340 | 370 | 8,9 | M 16 SW 14 | 180 |
| 323,9 | GRIP 323,9 | 320,0 - 327,0 | 6,5 | 13 | 35 | 142 | 355 | 385 | 9,2 | M 16 SW 14 | 180 |
| 326,0 | GRIP 326,0 | 322,0 - 329,0 | 6,5 | 13 | 35 | 142 | 360 | 390 | 9,3 | M 16 SW 14 | 180 |
| 355,6 | GRIP 355,6 | 352,0 - 359,0 | 6 | 12 | 35 | 142 | 390 | 420 | 9,8 | M 16 SW 14 | 180 |
| 406,4 | GRIP 406,4 | 402,0 - 410,0 | 4,5 | 9 | 35 | 142 | 440 | 470 | 10,8 | M 16 SW 14 | 180 |
| 429,0 | GRIP 429,0 | 426,0 - 431,0 | 4 | 8,5 | 35 | 142 | 460 | 490 | 11,3 | M 16 SW 14 | 180 |
| 442,0 | GRIP 442,0 | 439,0 - 444,0 | 4 | 8 | 35 | 142 | 475 | 505 | 11,5 | M 16 SW 14 | 180 |
| 457,2 | GRIP 457,2 | 454,0 - 459,0 | 4 | 8 | 35 | 142 | 490 | 520 | 11,8 | M 16 SW 14 | 180 |
| 508,0 | GRIP 508,0 | 505,0 - 510,0 | 2,5 | 5 | 35 | 142 | 540 | 570 | 12,7 | M 16 SW 14 | 180 |
| 531,0 | GRIP 531,0 | 528,0 - 534,0 | 2,5 | 5 | 35 | 142 | 565 | 595 | 13,2 | M 16 SW 14 | 180 |
| 558,8 | GRIP 558,8 | 556,0 - 562,0 | 2 | 4,5 | 35 | 142 | 590 | 620 | 13,7 | M 16 SW 14 | 180 |
| 609,6 | GRIP 609,6 | 606,0 - 613,0 | 1,5 | 3 | 35 | 142 | 640 | 670 | 14,7 | M 16 SW 14 | 180 |
| 634,0 | GRIP 634,0 | 631,0 - 637,0 | 1,5 | 3 | 35 | 142 | 665 | 695 | 15,1 | M 16 SW 14 | 200 |
| 711,2 | GRIP 711,2 | 707,0 - 715,0 | 1,5 | 2,5 | 35 | 142 | 745 | 775 | 16,6 | M 16 Sw 14 | 200 |

PN¹ (Nennndruck) ist der für den Schiffbau maximal zulässige Arbeitsdruck basierend auf einem Sicherheitsfaktor von ≥ 4 .
 WP² ist der max. Arbeitsdruck für Industrieanwendungen mit einem Sicherheitsfaktor gemäß NORMA-Spezifikation.

Technische Daten und Bestellhinweise

| NORMACONNECT® FGR GRIP | | | | | | | | |
|------------------------|-------------|-------------------|---------------|-------------------|---------------|-------------------|---------------|---------------|
| Ø RA (mm) | Bezeichnung | W2 Artikel-Nr. | | W4 Artikel-Nr. | | W5 Artikel-Nr. | | |
| | | EPDM | NBR | EPDM | NBR | EPDM | NBR | FKM |
| 26,9 | GRIP 26,9 | 0578 9100 026 | 0578 8400 026 | 0578 9200 026 | 0578 8500 026 | 0578 9300 026 | 0578 8600 026 | |
| 28,0 | GRIP 28,0 | 0578 9100 028 | 0578 8400 028 | 0578 9200 028 | 0578 8500 028 | 0578 9300 028 | 0578 8600 028 | |
| 30,0 | GRIP 30,0 | 0578 9100 030 | 0578 8400 030 | 0578 9200 030 | 0578 8500 030 | 0578 9300 030 | 0578 8600 030 | |
| 33,7 | GRIP 33,7 | 0578 9100 033 | 0578 8400 033 | 0578 9200 033 | 0578 8500 033 | 0578 9300 033 | 0578 8600 033 | 0578 9900 033 |
| 35,0 | GRIP 35,0 | 0578 9100 035 | 0578 8400 035 | 0578 9200 035 | 0578 8500 035 | 0578 9300 035 | 0578 8600 035 | |
| 38,0 | GRIP 38,0 | 0578 9100 038 | 0578 8400 038 | 0578 9200 038 | 0578 8500 038 | 0578 9300 038 | 0578 8600 038 | 0578 9900 038 |
| 42,4 | GRIP 42,4 | 0578 9100 042 | 0578 8400 042 | 0578 9200 042 | 0578 8500 042 | 0578 9300 042 | 0578 8600 042 | 0578 9900 042 |
| 44,5 | GRIP 44,5 | 0578 9100 044 | 0578 8400 044 | 0578 9200 044 | 0578 8500 044 | 0578 9300 044 | 0578 8600 044 | |
| 48,3 | GRIP 48,3 | 0578 9100 048 | 0578 8400 048 | 0578 9200 048 | 0578 8500 048 | 0578 9300 048 | 0578 8600 048 | 0578 9900 048 |
| 54,0 | GRIP 54,0 | 0578 9100 054 | 0578 8400 054 | 0578 9200 054 | 0578 8500 054 | 0578 9300 054 | 0578 8600 054 | |
| 57,0 | GRIP 57,0 | 0578 9100 057 | 0578 8400 057 | 0578 9200 057 | 0578 8500 057 | 0578 9300 057 | 0578 8600 057 | 0578 9900 057 |
| 60,3 | GRIP 60,3 | 0578 9100 060 | 0578 8400 060 | 0578 9200 060 | 0578 8500 060 | 0578 9300 060 | 0578 8600 060 | 0578 9900 060 |
| 63,0 | GRIP 63,0 | 0578 9100 063 | 0578 8400 063 | 0578 9200 063 | 0578 8500 063 | 0578 9300 063 | 0578 8600 063 | 0578 9900 063 |
| 70,0 | GRIP 70,0 | 0578 9100 070 | 0578 8400 070 | 0578 9200 070 | 0578 8500 070 | 0578 9300 070 | 0578 8600 070 | |
| 73,0 | GRIP 73,0 | 0578 9100 073 | 0578 8400 073 | 0578 9200 073 | 0578 8500 073 | 0578 9300 073 | 0578 8600 073 | |
| 76,1 | GRIP 76,1 | 0578 9100 076 | 0578 8400 076 | 0578 9200 076 | 0578 8500 076 | 0578 9300 076 | 0578 8600 076 | 0578 9900 076 |
| 80,0 | GRIP 80,0 | 0578 9100 080 | 0578 8400 080 | 0578 9200 080 | 0578 8500 080 | 0578 9300 080 | 0578 8600 080 | |
| 84,0 | GRIP 84,0 | 0578 9100 084 | 0578 8400 084 | 0578 9200 084 | 0578 8500 084 | 0578 9300 084 | 0578 8600 084 | |
| 88,9 | GRIP 88,9 | 0578 9100 088 | 0578 8400 088 | 0578 9200 088 | 0578 8500 088 | 0578 9300 088 | 0578 8600 088 | 0578 9900 088 |
| 101,6 | GRIP 101,6 | 0578 9100 101 | 0578 8400 101 | 0578 9200 101 | 0578 8500 101 | 0578 9300 101 | 0578 8600 101 | |
| 104,0 | GRIP 104,0 | 0578 9100 104 | 0578 8400 104 | 0578 9200 104 | 0578 8500 104 | 0578 9300 104 | 0578 8600 104 | |
| 108,0 | GRIP 108,0 | 0578 9100 108 | 0578 8400 108 | 0578 9200 108 | 0578 8500 108 | 0578 9300 108 | 0578 8600 108 | |
| 110,0 | GRIP 110,0 | 0578 9100 110 | 0578 8400 110 | 0578 9200 110 | 0578 8500 110 | 0578 9300 110 | 0578 8600 110 | |
| 114,3 | GRIP 114,3 | 0578 9100 114 | 0578 8400 114 | 0578 9200 114 | 0578 8500 114 | 0578 9300 114 | 0578 8600 114 | 0578 9900 114 |
| 129,0 | GRIP 129,0 | 0578 9100 129 | 0578 8400 129 | 0578 9200 129 | 0578 8500 129 | 0578 9300 129 | 0578 8600 129 | 0578 9900 129 |
| 133,0 | GRIP 133,0 | 0578 9100 133 | 0578 8400 133 | 0578 9200 133 | 0578 8500 133 | 0578 9300 133 | 0578 8600 133 | |
| 139,7 | GRIP 139,7 | 0578 9100 139 | 0578 8400 139 | 0578 9200 139 | 0578 8500 139 | 0578 9300 139 | 0578 8600 139 | 0578 9900 139 |
| 141,3 | GRIP 141,3 | 0578 9100 141 | 0578 8400 141 | 0578 9200 141 | 0578 8500 141 | 0578 9300 141 | 0578 8600 141 | |
| 154,0 | GRIP 154,0 | 0578 9100 154 | 0578 8400 154 | 0578 9200 154 | 0578 8500 154 | 0578 9300 154 | 0578 8600 154 | |
| 159,0 | GRIP 159,0 | 0578 9100 159 | 0578 8400 159 | 0578 9200 159 | 0578 8500 159 | 0578 9300 159 | 0578 8600 159 | |
| 168,3 | GRIP 168,3 | 0578 9100 168 | 0578 8400 168 | 0578 9200 168 | 0578 8500 168 | 0578 9300 168 | 0578 8600 168 | 0578 9900 168 |
| 193,7 | GRIP 193,7 | 0577 8100 ... | 0577 8400 ... | 0577 8200 ... | 0577 8500 ... | 0577 8300 ... | 0577 8600 ... | |
| 206,0 | GRIP 206,0 | 0577 8100 ... | 0577 8400 ... | 0577 8200 ... | 0577 8500 ... | 0577 8300 ... | 0577 8600 ... | |
| 219,1 | GRIP 219,1 | 0577 8100 ... | 0577 8400 ... | 0577 8200 ... | 0577 8500 ... | 0577 8300 ... | 0577 3600 ... | |
| 225,0 | GRIP 225,0 | 0577 8100 ... | 0577 8400 ... | 0577 8200 ... | 0577 8500 ... | 0577 8300 ... | 0577 8600 ... | |
| 229,9 | GRIP 229,9 | 0577 8100 ... | 0577 8400 ... | 0577 8200 ... | 0577 8500 ... | 0577 8300 ... | 0577 8600 ... | |
| 244,5 | GRIP 244,5 | 0577 8100 ... | 0577 8400 ... | 0577 8200 ... | 0577 8500 ... | 0577 8300 ... | 0577 8600 ... | |
| 254,0 | GRIP 254,0 | 0577 8100 ... | 0577 8400 ... | 0577 8200 ... | 0577 8500 ... | 0577 8300 ... | 0577 8600 ... | |
| 267,0 | GRIP 267,0 | 0577 8100 ... | 0577 8400 ... | 0577 8200 ... | 0577 8500 ... | 0577 8300 ... | 0577 8600 ... | |
| 273,0 | GRIP 273,0 | 0577 8100 ... | 0577 8400 ... | 0577 8200 ... | 0577 8500 ... | 0577 8300 ... | 0577 3600 ... | |
| 306,0 | GRIP 306,0 | 0577 8100 ... | 0577 8400 ... | 0577 8200 ... | 0577 8500 ... | 0577 8300 ... | 0577 8600 ... | |
| 323,9 | GRIP 323,9 | 0577 8100 ... | 0577 8400 ... | 0577 8200 ... | 0577 8500 ... | 0577 8300 ... | 0577 8600 ... | |
| 326,0 | GRIP 326,0 | 0577 8100 ... | 0577 8400 ... | 0577 8200 ... | 0577 8500 ... | 0577 8300 ... | 0577 8600 ... | |
| 355,6 | GRIP 355,6 | 0577 8100 ... | 0577 8400 ... | 0577 8200 ... | 0577 8500 ... | 0577 8300 ... | 0577 8600 ... | |
| 406,4 | GRIP 406,4 | 0577 8100 ... | 0577 8400 ... | 0577 8200 ... | 0577 8500 ... | 0577 8300 ... | 0577 8600 ... | |
| 429,0 | GRIP 429,0 | 0577 8100 ... | 0577 8400 ... | 0577 8200 ... | 0577 8500 ... | 0577 8300 ... | 0577 8600 ... | |
| 442,0 | GRIP 442,0 | 0577 8100 ... | 0577 8400 ... | 0577 8200 ... | 0577 8500 ... | 0577 8300 ... | 0577 8600 ... | |
| 457,2 | GRIP 457,2 | 0577 8100 ... | 0577 8400 ... | 0577 8200 ... | 0577 8500 ... | 0577 8300 ... | 0577 8600 ... | |
| 508,0 | GRIP 508,0 | 0577 8100 ... | 0577 8400 ... | 0577 8200 ... | 0577 8500 ... | 0577 8300 ... | 0577 8600 ... | |
| 531,0 | GRIP 531,0 | 0577 8100 ... | 0577 8400 ... | 0577 8200 ... | 0577 8500 ... | 0577 8300 ... | 0577 8600 ... | |
| 558,8 | GRIP 558,8 | 0577 8100 ... | 0577 8400 ... | 0577 8200 ... | 0577 8500 ... | 0577 8300 ... | 0577 8600 ... | |
| 609,6 | GRIP 609,6 | 0577 8100 ... | 0577 8400 ... | 0577 8200 ... | 0577 8500 ... | 0577 8300 ... | 0577 8600 ... | |
| 634,0 | GRIP 634,0 | 0577 8100 ... | 0577 8400 ... | 0577 8200 ... | 0577 8500 ... | 0577 8300 ... | 0577 8600 ... | |
| 711,2 | GRIP 711,2 | 0577 8100 ... | 0577 8400 ... | 0577 8200 ... | 0577 8500 ... | 0577 8300 ... | 0577 8600 ... | |

... = Ø ohne Dezimalstellen in mm

GRIP E

NORMACONNECT® GRIP E sind axial zugfeste Rohrkupplungen zum Verbinden von Metallrohren.





Werkstoffe

W2, W5

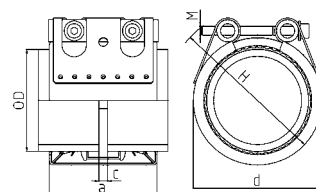
NORMACONNECT®

NORMACONNECT® FGR GRIP E

| Ø RA (mm) | Bezeichnung | Spannbereiche | PN ¹ | WP ² | C max | Abmessungen (ca.) | | | Gewicht (ca.) | Innensechskant-Verschlussbolzen | |
|--------------|--------------|-----------------------|--|--|----------|-------------------|-----------|-----------|------------------|---------------------------------|--------------------------|
| | | RAmin - RAmax (mm) |  [bar] |  [bar] | (mm) | a (mm) | d (mm) | H (mm) | (kg/Stk.) | Gewinde | Anzugsdrehmoment (Nm) |
| 26,9 | GRIP E 26,9 | 26,4 - 27,5 | 16 | 70 | 3 | 67 | 50 | 70 | 0,32 | M 8 SW 6 | 10 |
| 28,0 | GRIP E 28,0 | 27,5 - 28,5 | 16 | 70 | 3 | 67 | 50 | 70 | 0,32 | M 8 SW 6 | 10 |
| 30,0 | GRIP E 30,0 | 29,5 - 30,6 | 16 | 70 | 3 | 67 | 50 | 70 | 0,32 | M 8 SW 6 | 10 |
| 33,7 | GRIP E 33,7 | 33,0 - 34,3 | 16 | 60 | 3 | 67 | 55 | 75 | 0,33 | M 8 SW 6 | 10 |
| 35,0 | GRIP E 35,0 | 34,5 - 35,6 | 16 | 60 | 8 | 63 | 55 | 75 | 0,45 | M 8 SW 6 | 15 |
| 38,0 | GRIP E 38,0 | 37,5 - 38,6 | 16 | 60 | 8 | 63 | 60 | 80 | 0,45 | M 8 SW 6 | 15 |
| 42,4 | GRIP E 42,4 | 41,7 - 43,0 | 16 | 50 | 8 | 63 | 65 | 85 | 0,46 | M 8 SW 6 | 15 |
| 44,5 | GRIP E 44,5 | 44,0 - 45,1 | 16 | 50 | 8 | 63 | 65 | 85 | 0,47 | M 8 SW 6 | 15 |
| 48,3 | GRIP E 48,3 | 47,6 - 50,5 | 16 | 50 | 8 | 63 | 70 | 90 | 0,48 | M 8 SW 6 | 15 |
| 54,0 | GRIP E 54,0 | 53,3 - 54,6 | 16 | 50 | 17 | 78 | 75 | 95 | 0,62 | M 8 SW 6 | 15 |
| 57,0 | GRIP E 57,0 | 56,3 - 57,7 | 16 | 50 | 17 | 78 | 80 | 100 | 0,63 | M 8 SW 6 | 20 |
| 60,3 | GRIP E 60,3 | 59,5 - 61,0 | 16 | 40 | 17 | 78 | 85 | 105 | 0,64 | M 8 SW 6 | 20 |
| 70,0 | GRIP E 70,0 | 69,0 - 71,0 | 16 | 40 | 25 | 98 | 90 | 110 | 1,21 | M 10 SW 8 | 30 |
| 73,0 | GRIP E 73,0 | 72,1 - 73,8 | 16 | 40 | 25 | 98 | 95 | 115 | 1,23 | M 10 SW 8 | 30 |
| 76,1 | GRIP E 76,1 | 75,2 - 77,0 | 16 | 35 | 25 | 98 | 100 | 120 | 1,23 | M 10 SW 8 | 30 |
| 80,0 | GRIP E 80,0 | 79,0 - 80,8 | 16 | 35 | 25 | 98 | 100 | 120 | 1,27 | M 10 SW 8 | 30 |
| 84,0 | GRIP E 84,0 | 83,0 - 85,0 | 16 | 35 | 25 | 98 | 105 | 125 | 1,29 | M 10 SW 8 | 30 |
| 88,9 | GRIP E 88,9 | 87,0 - 89,9 | 16 | 35 | 25 | 98 | 110 | 130 | 1,31 | M 10 SW 8 | 30 |
| 101,6 | GRIP E 101,6 | 100,4 - 102,8 | 16 | 35 | 25 | 98 | 125 | 145 | 1,45 | M 10 SW 8 | 30 |
| 104,0 | GRIP E 104,0 | 102,8 - 106,1 | 16 | 35 | 25 | 98 | 125 | 145 | 1,46 | M 10 SW 8 | 30 |
| 108,0 | GRIP E 108,0 | 106,8 - 109,2 | 16 | 35 | 25 | 98 | 130 | 150 | 1,49 | M 10 SW 8 | 30 |
| 110,0 | GRIP E 110,0 | 108,8 - 111,4 | 16 | 35 | 25 | 98 | 130 | 150 | 1,54 | M 10 SW 8 | 30 |
| 114,3 | GRIP E 114,3 | 113,0 - 115,5 | 16 | 35 | 25 | 98 | 135 | 155 | 1,54 | M 10 SW 8 | 50 |
| 129,0 | GRIP E 129,0 | 127,6 - 131,1 | 16 | 32 | 35 | 115 | 155 | 185 | 2,83 | M 12 SW 10 | 50 |
| 133,0 | GRIP E 133,0 | 131,5 - 134,4 | 16 | 32 | 35 | 115 | 160 | 190 | 2,93 | M 12 SW 10 | 50 |
| 139,7 | GRIP E 139,7 | 138,1 - 141,6 | 16 | 32 | 35 | 115 | 165 | 195 | 3,04 | M 12 SW 10 | 50 |
| 141,3 | GRIP E 141,3 | 139,6 - 142,8 | 16 | 32 | 35 | 115 | 170 | 200 | 3,04 | M 12 SW 10 | 50 |
| 154,0 | GRIP E 154,0 | 152,3 - 156,1 | 16 | 32 | 35 | 115 | 180 | 210 | 3,17 | M 12 SW 10 | 60 |
| 159,0 | GRIP E 159,0 | 157,3 - 160,7 | 16 | 32 | 35 | 115 | 185 | 215 | 3,28 | M 12 SW 10 | 60 |
| 168,3 | GRIP E 168,3 | 166,5 - 170,1 | 16 | 32 | 35 | 115 | 195 | 225 | 3,35 | M 12 SW 10 | 60 |
| 193,7 | GRIP E 193,7 | 192,0 - 196,0 | 10 | 20 | 35 | 141 | 225 | 255 | 6,2 | M 16 SW 14 | 100 |
| 206,0 | GRIP E 206,0 | 202,0 - 208,0 | 10 | 20 | 35 | 141 | 240 | 270 | 6,5 | M 16 SW 14 | 100 |
| 219,1 | GRIP E 219,1 | 216,0 - 221,0 | 10 | 20 | 35 | 141 | 250 | 280 | 6,7 | M 16 SW 14 | 100 |
| 225,0 | GRIP E 225,0 | 222,0 - 227,0 | 10 | 16 | 35 | 140 | 255 | 285 | 6,2 | M 16 SW 14 | 100 |
| 229,9 | GRIP E 229,9 | 228,0 - 232,0 | 5,5 | 16 | 35 | 140 | 260 | 290 | 6,3 | M 16 SW 14 | 100 |
| 244,5 | GRIP E 244,5 | 242,0 - 247,0 | 5,5 | 15 | 35 | 140 | 275 | 305 | 6,5 | M 16 SW 14 | 100 |
| 254,0 | GRIP E 254,0 | 250,0 - 256,0 | 5,5 | 14 | 35 | 140 | 285 | 315 | 6,6 | M 16 SW 14 | 100 |
| 267,0 | GRIP E 267,0 | 264,0 - 269,0 | 5,5 | 13,5 | 35 | 140 | 300 | 330 | 6,8 | M 16 SW 14 | 100 |
| 273,0 | GRIP E 273,0 | 270,0 - 275,0 | 5,5 | 13 | 35 | 140 | 305 | 335 | 6,9 | M 16 SW 14 | 100 |
| 306,0 | GRIP E 306,0 | 302,0 - 308,0 | 5,5 | 10,5 | 35 | 140 | 340 | 370 | 7,4 | M 16 SW 14 | 120 |
| 323,9 | GRIP E 323,9 | 320,0 - 327,0 | 3 | 9,5 | 35 | 140 | 355 | 385 | 7,7 | M 16 SW 14 | 120 |
| 326,0 | GRIP E 326,0 | 322,0 - 329,0 | 3 | 9,5 | 35 | 140 | 360 | 390 | 7,7 | M 16 SW 14 | 120 |
| 355,6 | GRIP E 355,6 | 352,0 - 359,0 | 2,7 | 8,5 | 35 | 140 | 390 | 420 | 8,2 | M 16 SW 14 | 120 |
| 406,4 | GRIP E 406,4 | 402,0 - 410,0 | 2,5 | 7,0 | 35 | 140 | 440 | 470 | 8,9 | M 16 SW 14 | 120 |
| 429,0 | GRIP E 429,0 | 426,0 - 431,0 | 2,5 | 6,5 | 35 | 140 | 460 | 490 | 9,3 | M 16 SW 14 | 120 |
| 442,0 | GRIP E 442,0 | 439,0 - 444,0 | 2,5 | 6,5 | 35 | 140 | 475 | 505 | 9,5 | M 16 SW 14 | 140 |
| 457,2 | GRIP E 457,2 | 454,0 - 459,0 | 2,5 | 6,0 | 35 | 140 | 490 | 520 | 9,7 | M 16 SW 14 | 140 |
| 508,0 | GRIP E 508,0 | 505,0 - 510,0 | 2 | 4,0 | 35 | 140 | 540 | 570 | 10,5 | M 16 SW 14 | 140 |
| 531,0 | GRIP E 531,0 | 528,0 - 534,0 | 1,5 | 4,0 | 35 | 140 | 565 | 595 | 10,8 | M 16 SW 14 | 140 |
| 558,8 | GRIP E 558,8 | 556,0 - 562,0 | 1,5 | 3,5 | 35 | 140 | 590 | 620 | 11,3 | M 16 SW 14 | 140 |
| 609,6 | GRIP E 609,6 | 606,0 - 613,0 | 1 | 2,0 | 35 | 140 | 640 | 670 | 12,0 | M 16 SW 14 | 140 |

PN¹ (Nennndruck) ist der für den Schiffbau maximal zulässige Arbeitsdruck basierend auf einem Sicherheitsfaktor von ≥ 4.
WP² ist der max. Arbeitsdruck für Industrieanwendungen mit einem Sicherheitsfaktor gemäß NORMA-Spezifikation.

Technische Daten und Bestellhinweise



| NORMACONNECT® FGR GRIP E | | | | | | | |
|--------------------------|--------------|-------------------|---------------|-------------------|---------------|-------------------|---------------|
| Ø RA (mm) | Bezeichnung | W2 Artikel-Nr. | | W4 Artikel-Nr. | | W5 Artikel-Nr. | |
| | | EPDM | NBR | EPDM | NBR | EPDM | NBR |
| 26,9 | GRIP E 26,9 | 0579 9100 026 | 0579 8400 026 | 0579 9200 026 | 0579 8500 026 | 0579 9300 026 | 0579 8600 026 |
| 28,0 | GRIP E 28,0 | 0579 9100 028 | 0579 8400 028 | 0579 9200 028 | 0579 8500 028 | 0579 9300 028 | 0579 8600 028 |
| 30,0 | GRIP E 30,0 | 0579 9100 030 | 0579 8400 030 | 0579 9200 030 | 0579 8500 030 | 0579 9300 030 | 0579 8600 030 |
| 33,7 | GRIP E 33,7 | 0579 9100 033 | 0579 8400 033 | 0579 9200 033 | 0579 8500 033 | 0579 9300 033 | 0579 8600 033 |
| 35,0 | GRIP E 35,0 | 0579 9100 035 | 0579 8400 035 | 0579 9200 035 | 0579 8500 035 | 0579 9300 035 | 0579 8600 035 |
| 38,0 | GRIP E 38,0 | 0579 9100 038 | 0579 8400 038 | 0579 9200 038 | 0579 8500 038 | 0579 9300 038 | 0579 8600 038 |
| 42,4 | GRIP E 42,4 | 0579 9100 042 | 0579 8400 042 | 0579 9200 042 | 0579 8500 042 | 0579 9300 042 | 0579 8600 042 |
| 44,5 | GRIP E 44,5 | 0579 9100 044 | 0579 8400 044 | 0579 9200 044 | 0579 8500 044 | 0579 9300 044 | 0579 8600 044 |
| 48,3 | GRIP E 48,3 | 0579 9100 048 | 0579 8400 048 | 0579 9200 048 | 0579 8500 048 | 0579 9300 048 | 0579 8600 048 |
| 54,0 | GRIP E 54,0 | 0579 9100 054 | 0579 8400 054 | 0579 9200 054 | 0579 8500 054 | 0579 9300 054 | 0579 8600 054 |
| 57,0 | GRIP E 57,0 | 0579 9100 057 | 0579 8400 057 | 0579 9200 057 | 0579 8500 057 | 0579 9300 057 | 0579 8600 057 |
| 60,3 | GRIP E 60,3 | 0579 9100 060 | 0579 8400 060 | 0579 9200 060 | 0579 8500 060 | 0579 9300 060 | 0579 8600 060 |
| 70,0 | GRIP E 70,0 | 0579 9100 070 | 0579 8400 070 | 0579 9200 070 | 0579 8500 070 | 0579 9300 070 | 0579 8600 070 |
| 73,0 | GRIP E 73,0 | 0579 9100 073 | 0579 8400 073 | 0579 9200 073 | 0579 8500 073 | 0579 9300 073 | 0579 8600 073 |
| 76,1 | GRIP E 76,1 | 0579 9100 076 | 0579 8400 076 | 0579 9200 076 | 0579 8500 076 | 0579 9300 076 | 0579 8600 076 |
| 80,0 | GRIP E 80,0 | 0579 9100 080 | 0579 8400 080 | 0579 9200 080 | 0579 8500 080 | 0579 9300 080 | 0579 8600 080 |
| 84,0 | GRIP E 84,0 | 0579 9100 084 | 0579 8400 084 | 0579 9200 084 | 0579 8500 084 | 0579 9300 084 | 0579 8600 084 |
| 88,9 | GRIP E 88,9 | 0579 9100 088 | 0579 8400 088 | 0579 9200 088 | 0579 8500 088 | 0579 9300 088 | 0579 8600 088 |
| 101,6 | GRIP E 101,6 | 0579 9100 101 | 0579 8400 101 | 0579 9200 101 | 0579 8500 101 | 0579 9300 101 | 0579 8600 101 |
| 104,0 | GRIP E 104,0 | 0579 9100 104 | 0579 8400 104 | 0579 9200 104 | 0579 8500 104 | 0579 9300 104 | 0579 8600 104 |
| 108,0 | GRIP E 108,0 | 0579 9100 108 | 0579 8400 108 | 0579 9200 108 | 0579 8500 108 | 0579 9300 108 | 0579 8600 108 |
| 110,0 | GRIP E 110,0 | 0579 9100 110 | 0579 8400 110 | 0579 9200 110 | 0579 8500 110 | 0579 9300 110 | 0579 8600 110 |
| 114,3 | GRIP E 114,3 | 0579 9100 114 | 0579 8400 114 | 0579 9200 114 | 0579 8500 114 | 0579 9300 114 | 0579 8600 114 |
| 129,0 | GRIP E 129,0 | 0579 9100 129 | 0579 8400 129 | 0579 9200 129 | 0579 8500 129 | 0579 9300 129 | 0579 8600 129 |
| 133,0 | GRIP E 133,0 | 0579 9100 133 | 0579 8400 133 | 0579 9200 133 | 0579 8500 133 | 0579 9300 133 | 0579 8600 133 |
| 139,7 | GRIP E 139,7 | 0579 9100 139 | 0579 8400 139 | 0579 9200 139 | 0579 8500 139 | 0579 9300 139 | 0579 8600 139 |
| 141,3 | GRIP E 141,3 | 0579 9100 141 | 0579 8400 141 | 0579 9200 141 | 0579 8500 141 | 0579 9300 141 | 0579 8600 141 |
| 154,0 | GRIP E 154,0 | 0579 9100 154 | 0579 8400 154 | 0579 9200 154 | 0579 8500 154 | 0579 9300 154 | 0579 8600 154 |
| 159,0 | GRIP E 159,0 | 0579 9100 159 | 0579 8400 159 | 0579 9200 159 | 0579 8500 159 | 0579 9300 159 | 0579 8600 159 |
| 168,3 | GRIP E 168,3 | 0579 9100 168 | 0579 8400 168 | 0579 9200 168 | 0579 8500 168 | 0579 9300 168 | 0579 8600 168 |
| 193,7 | GRIP E 193,7 | 0574 8100 ... | 0574 8400 ... | 0574 8200 ... | 0574 8500 ... | 0574 8300 ... | 0574 8600 ... |
| 206,0 | GRIP E 206,0 | 0574 8100 ... | 0574 8400 ... | 0574 8200 ... | 0574 8500 ... | 0574 8300 ... | 0574 8600 ... |
| 219,1 | GRIP E 219,1 | 0574 8100 ... | 0574 8400 ... | 0574 8200 ... | 0574 8500 ... | 0574 8300 ... | 0574 8600 ... |
| 225,0 | GRIP E 225,0 | 0574 8100 ... | 0574 8400 ... | 0574 8200 ... | 0574 8500 ... | 0574 8300 ... | 0574 8600 ... |
| 229,9 | GRIP E 229,9 | 0574 8100 ... | 0574 8400 ... | 0574 8200 ... | 0574 8500 ... | 0574 8300 ... | 0574 8600 ... |
| 244,5 | GRIP E 244,5 | 0574 8100 ... | 0574 8400 ... | 0574 8200 ... | 0574 8500 ... | 0574 8300 ... | 0574 8600 ... |
| 254,0 | GRIP E 254,0 | 0574 8100 ... | 0574 8400 ... | 0574 8200 ... | 0574 8500 ... | 0574 8300 ... | 0574 8600 ... |
| 267,0 | GRIP E 267,0 | 0574 8100 ... | 0574 8400 ... | 0574 8200 ... | 0574 8500 ... | 0574 8300 ... | 0574 8600 ... |
| 273,0 | GRIP E 273,0 | 0574 8100 ... | 0574 8400 ... | 0574 8200 ... | 0574 8500 ... | 0574 8300 ... | 0574 8600 ... |
| 306,0 | GRIP E 306,0 | 0574 8100 ... | 0574 8400 ... | 0574 8200 ... | 0574 8500 ... | 0574 8300 ... | 0574 8600 ... |
| 323,9 | GRIP E 323,9 | 0574 8100 ... | 0574 8400 ... | 0574 8200 ... | 0574 8500 ... | 0574 8300 ... | 0574 8600 ... |
| 326,0 | GRIP E 326,0 | 0574 8100 ... | 0574 8400 ... | 0574 8200 ... | 0574 8500 ... | 0574 8300 ... | 0574 8600 ... |
| 355,6 | GRIP E 355,6 | 0574 8100 ... | 0574 8400 ... | 0574 8200 ... | 0574 8500 ... | 0574 8300 ... | 0574 8600 ... |
| 406,4 | GRIP E 406,4 | 0574 8100 ... | 0574 8400 ... | 0574 8200 ... | 0574 8500 ... | 0574 8300 ... | 0574 8600 ... |
| 429,0 | GRIP E 429,0 | 0574 8100 ... | 0574 8400 ... | 0574 8200 ... | 0574 8500 ... | 0574 8300 ... | 0574 8600 ... |
| 442,0 | GRIP E 442,0 | 0574 8100 ... | 0574 8400 ... | 0574 8200 ... | 0574 8500 ... | 0574 8300 ... | 0574 8600 ... |
| 457,2 | GRIP E 457,2 | 0574 8100 ... | 0574 8400 ... | 0574 8200 ... | 0574 8500 ... | 0574 8300 ... | 0574 8600 ... |
| 508,0 | GRIP E 508,0 | 0574 8100 ... | 0574 8400 ... | 0574 8200 ... | 0574 8500 ... | 0574 8300 ... | 0574 8600 ... |
| 531,0 | GRIP E 531,0 | 0574 8100 ... | 0574 8400 ... | 0574 8200 ... | 0574 8500 ... | 0574 8300 ... | 0574 8600 ... |
| 558,8 | GRIP E 558,8 | 0574 8100 ... | 0574 8400 ... | 0574 8200 ... | 0574 8500 ... | 0574 8300 ... | 0574 8600 ... |
| 609,6 | GRIP E 609,6 | 0574 8100 ... | 0574 8400 ... | 0574 8200 ... | 0574 8500 ... | 0574 8300 ... | 0574 8600 ... |

... = Ø ohne Dezimalstellen in mm