

NORMAFIX® Isophonic Pipe Clamp



Enables pipes to be attached to walls quickly and easily, avoiding noise and vibration

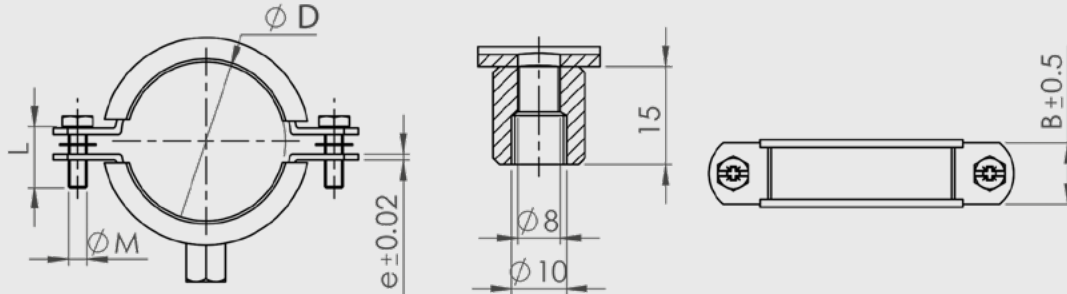
- ✓ Full range 17–1,250 mm pipe diameter
- ✓ Captive side screws remain in place during clamp and pipe installation
- ✓ Dual terminal nut for both M8 and M10 screw
- ✓ PVC profile for noise and vibration reduction

PIPE SUPPORT SYSTEMS

Applications	Material										
The NORMAFIX® Isophonic Pipe Clamp fixes pipes of different diameters to building structures such as walls and ceilings. The pipe clamp consists of two halves, where one half has a dual terminal nut suitable for M8 and M10 screws, for wall/ceiling mounting. The other half secures the pipe in place.	<table border="1"> <tr> <td>Group</td> <td>W1, W4, W5</td> </tr> <tr> <td>Inlay</td> <td>PVC</td> </tr> <tr> <td>PVC Hardness</td> <td>Shore hardness 66-73 (ISO 686)</td> </tr> <tr> <td>Temperature</td> <td>-10 °C to +50 °C</td> </tr> <tr> <td>Maximum Load Recommended</td> <td>80–200 kg (785–2,500 N)</td> </tr> </table>	Group	W1, W4, W5	Inlay	PVC	PVC Hardness	Shore hardness 66-73 (ISO 686)	Temperature	-10 °C to +50 °C	Maximum Load Recommended	80–200 kg (785–2,500 N)
Group	W1, W4, W5										
Inlay	PVC										
PVC Hardness	Shore hardness 66-73 (ISO 686)										
Temperature	-10 °C to +50 °C										
Maximum Load Recommended	80–200 kg (785–2,500 N)										

Description	Measure				Material Quality	Loading Capacity (vertical connection)		Loading Capacity (lateral connection)	Article Number	Packaging Quantity (pcs)	
	∅ (D) (mm)	Clamping Range (mm)	Band B × e (mm)	Screw M × l (mm)		System Failure (min)	Recommended Load (max)	System Failure (min)			
W1											
Isophonic Pipe Clamp M8+M10/18 W1	18	17-22	20×2		M6×20	W1	5,500Nm	2,500N	1,500N	0893 7121 018	50
Isophonic Pipe Clamp M8+M10/22 W1	22	20-26	20×2				5,500Nm	2,500N	1,500N	0893 7121 022	50
Isophonic Pipe Clamp M8+M10/28 W1	28	26-31	20×2				5,500Nm	2,500N	1,500N	0893 7121 028	50
Isophonic Pipe Clamp M8+M10/35 W1	35	32-36	20×2				5,500Nm	2,500N	1,500N	0893 7121 035	50
Isophonic Pipe Clamp M8+M10/40 W1	40	38-44	20×2				5,500Nm	2,500N	900N	0893 7121 040	25
Isophonic Pipe Clamp M8+M10/48 W1	48	48-52	20×2				5,500Nm	2,500N	900N	0893 7121 048	25
Isophonic Pipe Clamp M8+M10/54 W1	54	53-59	20×2				5,500Nm	2,500N	900N	0893 7121 054	25
Isophonic Pipe Clamp M8+M10/60 W1	60	60-66	20×2				5,500Nm	2,500N	900N	0893 7121 060	25
Isophonic Pipe Clamp M8+M10/70 W1	70	68-72	20×2				5,500Nm	2,500N	900N	0893 7121 070	25
Isophonic Pipe Clamp M8+M10/75 W1	75	74-82	20×2				5,500Nm	2,500N	900N	0893 7121 075	25
Isophonic Pipe Clamp M8+M10/84 W1	84	83-86	20×2				5,500Nm	2,500N	900N	0893 7121 084	25
Isophonic Pipe Clamp M8+M10/90 W1	90	87-92	20×2				5,500Nm	2,500N	900N	0893 7121 090	25
Isophonic Pipe Clamp M8+M10/100 W1	100	99-103	20×2				5,500Nm	2,500N	900N	0893 7121 100	25
Isophonic Pipe Clamp M8+M10/110 W1	110	109-115	20×2				5,500Nm	2,500N	900N	0893 7121 110	25
Isophonic Pipe Clamp M8+M10/115 W1	115	113-119	20×2				5,500Nm	2,500N	700N	0893 7121 115	25
Isophonic Pipe Clamp M8+M10/125 W1	125	125-131	20×2				5,500Nm	2,500N	700N	0893 7121 125	25
Isophonic Pipe Clamp M8+M10/133 W1	133	131-135	20×2				5,500Nm	2,500N	700N	0893 7121 133	25
Isophonic Pipe Clamp M8+M10/140 W1	140	138-142	20×2				5,500Nm	2,500N	700N	0893 7121 140	25
Isophonic Pipe Clamp M8+M10/150 W1	150	149-155	20×2		5,500Nm	2,500N	700N	0893 7121 150	25		
Isophonic Pipe Clamp M8+M10/160 W1	160	159-165	20×2		5,500Nm	2,500N	700N	0893 7121 160	25		
Isophonic Pipe Clamp M8+M10/180 W1	180	177-185	20×2		5,500Nm	2,500N	700N	0893 7121 180	25		
Isophonic Pipe Clamp M8+M10/200 W1	200	200-205	28×2		M6×30	W1	5,500Nm	2,500N	700N	0893 7121 200	25
Isophonic Pipe Clamp M8+M10/220 W1	220	219-226	28×2				5,500Nm	2,500N	700N	0893 7121 220	25
Isophonic Pipe Clamp M8+M10/225 W1	225	224-229	28×2				5,500Nm	2,500N	700N	0893 7121 225	25
Isophonic Pipe Clamp M8+M10/250 W1	250	249-255	28×2				5,500Nm	2,500N	700N	0893 7121 250	25
Isophonic Pipe Clamp M8+M10/280 W1	280	279-285	28×2				5,500Nm	2,500N		0893 7121 280	25
Isophonic Pipe Clamp M8+M10/300 W1	300	300-306	28×2				5,500Nm	2,500N		0893 7121 300	25
Isophonic Pipe Clamp M8+M10/315 W1	315	315-320	28×2				5,500Nm	2,500N		0893 7121 315	25
Isophonic Pipe Clamp M8+M10/350 W1	350	349-356	28×2				5,500Nm	2,500N		0893 7121 350	25
Isophonic Pipe Clamp M8+M10/400 W1	400	400-405	28×2				5,500Nm	2,500N		0893 7121 400	25
Isophonic Pipe Clamp M8+M10/450 W1	450	450-455	28×2				5,500Nm	2,500N		0893 7121 450	25
Isophonic Pipe Clamp M8+M10/500 W1	500	499-505	28×2				5,500Nm	2,500N		0893 7121 500	25
Isophonic Pipe Clamp M8+M10/560 W1	560	559-566	28×2.5				5,500Nm	2,500N		0893 7121 560	25
Isophonic Pipe Clamp M8+M10/600 W1	600	599-606	28×2.5				5,500Nm	2,500N		0893 7121 600	25
Isophonic Pipe Clamp M8+M10/630 W1	630	629-636	28×2.5				5,500Nm	2,500N		0893 7121 630	25
Isophonic Pipe Clamp M8+M10/700 W1	700	699-706	28×2.5				5,500Nm	2,500N		0893 7121 700	25

NORMAFIX® Isophonic Pipe Clamp



W4										
Isophonic Pipe Clamp M8+M10/22 W4	22	20-25	20x2	M6x20	W4	5,500Nm	2,500N	1,500N	0893 7124 022	50
Isophonic Pipe Clamp M8+M10/28 W4	28	26-31	20x2			5,500Nm	2,500N	1,500N	0893 7124 028	50
Isophonic Pipe Clamp M8+M10/35 W4	35	31-36	20x2			5,500Nm	2,500N	1,500N	0893 7124 035	50
Isophonic Pipe Clamp M8+M10/40 W4	40	38-44	20x2			5,500Nm	2,500N	900N	0893 7124 040	50
Isophonic Pipe Clamp M8+M10/48 W4	48	45-51	20x2			5,500Nm	2,500N	900N	0893 7124 048	50
Isophonic Pipe Clamp M8+M10/54 W4	54	52-57	20x2			5,500Nm	2,500N	900N	0893 7124 054	50
Isophonic Pipe Clamp M8+M10/60 W4	60	57-63	20x2			5,500Nm	2,500N	900N	0893 7124 060	50
Isophonic Pipe Clamp M8+M10/70 W4	70	69-73	20x2			5,500Nm	2,500N	900N	0893 7124 070	50
Isophonic Pipe Clamp M8+M10/75 W4	75	73-77	20x2			5,500Nm	2,500N	900N	0893 7124 075	50
Isophonic Pipe Clamp M8+M10/84 W4	84	83-86	20x2			5,500Nm	2,500N	900N	0893 7124 084	25
Isophonic Pipe Clamp M8+M10/90 W4	90	87-94	20x2			5,500Nm	2,500N	900N	0893 7124 090	25
Isophonic Pipe Clamp M8+M10/104 W4	104	103-110	20x2			5,500Nm	2,500N	900N	0893 7124 100	25
Isophonic Pipe Clamp M8+M10/110 W4	110	107-114	20x2			5,500Nm	2,500N	900N	0893 7124 110	25
Isophonic Pipe Clamp M8+M10/115 W4	115	110-118	20x2			5,500Nm	2,500N	700N	0893 7124 115	25
Isophonic Pipe Clamp M8+M10/125 W4	125	123-131	20x2	5,500Nm	2,500N	700N	0893 7124 125	25		
Isophonic Pipe Clamp M8+M10/133 W4	133	131-135	20x2	5,500Nm	2,500N	700N	0893 7124 133	25		
Isophonic Pipe Clamp M8+M10/140 W4	140	136-145	20x2	M6x25	W4	5,500Nm	2,500N	700N	0893 7124 140	25
Isophonic Pipe Clamp M8+M10/150 W4	150	147-155	20x2			5,500Nm	2,500N	700N	0893 7124 150	25
Isophonic Pipe Clamp M8+M10/160 W4	160	158-164	20x2			5,500Nm	2,500N	700N	0893 7124 160	25
Isophonic Pipe Clamp M8+M10/180 W4	180	178-184	20x2			5,500Nm	2,500N	700N	0893 7124 180	25
Isophonic Pipe Clamp M8+M10/204 W4	204	200-206	28x2			5,500Nm	2,500N	700N	0893 7124 204	25
Isophonic Pipe Clamp M8+M10/220 W4	220	216-226	28x2			M6x30	W4	5,500Nm	2,500N	700N
Isophonic Pipe Clamp M8+M10/225 W4	225	223-227	28x2	5,500Nm	2,500N			700N	0893 7124 225	25
Isophonic Pipe Clamp M8+M10/250 W4	250	249-256	28x2	5,500Nm	2,500N				0893 7124 250	25
Isophonic Pipe Clamp M8+M10/280 W4	280	279-285	28x2	5,500Nm	2,500N				0893 7124 280	25
Isophonic Pipe Clamp M8+M10/300 W4	300	300-307	28x2	5,500Nm	2,500N				0893 7124 300	25
Isophonic Pipe Clamp M8+M10/315 W4	315	314-321	28x2	5,500Nm	2,500N				0893 7124 315	25
Isophonic Pipe Clamp M8+M10/350 W4	350	350-359	28x2	5,500Nm	2,500N				0893 7124 350	25
Isophonic Pipe Clamp M8+M10/400 W4	400	399-406	28x2	5,500Nm	2,500N				0893 7124 400	25
Isophonic Pipe Clamp M8+M10/500 W4	500	499-506	28x2	5,500Nm	2,500N				0893 7124 500	25
W5										
Isophonic Pipe Clamp M8+M10/18 W5	18	17-20	20x2	M6x20	W5	5,500Nm	2,500N	1,500N	0893 7125 018	50
Isophonic Pipe Clamp M8+M10/22 W5	22	21-26	20x2			5,500Nm	2,500N	1,500N	0893 7125 022	50
Isophonic Pipe Clamp M8+M10/28 W5	28	26-29	20x2			5,500Nm	2,500N	1,500N	0893 7125 028	50
Isophonic Pipe Clamp M8+M10/35 W5	35	32-36	20x2			5,500Nm	2,500N	1,500N	0893 7125 035	50
Isophonic Pipe Clamp M8+M10/40 W5	40	39-42	20x2			5,500Nm	2,500N	900N	0893 7125 040	25
Isophonic Pipe Clamp M8+M10/48 W5	48	46-50	20x2			5,500Nm	2,500N	900N	0893 7125 048	25
Isophonic Pipe Clamp M8+M10/54 W5	54	53-57	20x2			5,500Nm	2,500N	900N	0893 7125 054	25

PIPE SUPPORT SYSTEMS

W5										
Isophonic Pipe Clamp M8+M10/60 W5	60	60-66	20x2	M6x20	W5	5,500Nm	2,500N	900N	0893 7125 060	25
Isophonic Pipe Clamp M8+M10/70 W5	70	68-73	20x2			5,500Nm	2,500N	900N	0893 7125 070	25
Isophonic Pipe Clamp M8+M10/75 W5	75	75-80	20x2			5,500Nm	2,500N	900N	0893 7125 075	25
Isophonic Pipe Clamp M8+M10/84 W5	84	81-89	20x2			5,500Nm	2,500N	900N	0893 7125 084	25
Isophonic Pipe Clamp M8+M10/90 W5	90	90-95	20x2			5,500Nm	2,500N	900N	0893 7125 090	25
Isophonic Pipe Clamp M8+M10/100 W5	100	98-103	20x2			5,500Nm	2,500N	900N	0893 7125 100	25
Isophonic Pipe Clamp M8+M10/110 W5	110	107-115	20x2	M6x25	W5	5,500Nm	2,500N	900N	0893 7125 110	25
Isophonic Pipe Clamp M8+M10/115 W5	115	114-119	20x2			5,500Nm	2,500N	700N	0893 7125 115	25
Isophonic Pipe Clamp M8+M10/125 W5	125	123-131	20x2			5,500Nm	2,500N	700N	0893 7125 125	25
Isophonic Pipe Clamp M8+M10/133 W5	133	131-138	20x2			5,500Nm	2,500N	700N	0893 7125 133	25
Isophonic Pipe Clamp M8+M10/140 W5	140	140-149	20x2			5,500Nm	2,500N	700N	0893 7125 140	25
Isophonic Pipe Clamp M8+M10/150 W5	150	148-155	20x2			5,500Nm	2,500N	700N	0893 7125 150	25
Isophonic Pipe Clamp M8+M10/160 W5	160	158-164	20x2	M6x30	W5	5,500Nm	2,500N	700N	0893 7125 160	25
Isophonic Pipe Clamp M8+M10/180 W5	180	177-184	20x2			5,500Nm	2,500N	700N	0893 7125 180	25
Isophonic Pipe Clamp M8+M10/204 W5	204	201-210	28x2			5,500Nm	2,500N	700N	0893 7125 204	25
Isophonic Pipe Clamp M8+M10/220 W5	220	213-225	28x2			5,500Nm	2,500N	700N	0893 7125 220	25
Isophonic Pipe Clamp M8+M10/225 W5	225	223-227	28x2			5,500Nm	2,500N	700N	0893 7125 225	25
Isophonic Pipe Clamp M8+M10/250 W5	250	249-255	28x2			5,500Nm	2,500N	700N	0893 7125 250	25
Isophonic Pipe Clamp M8+M10/280 W5	280	279-285	28x2	M6x30	W5	5,500Nm	2,500N		0893 7125 280	25
Isophonic Pipe Clamp M8+M10/300 W5	300	300-307	28x2			5,500Nm	2,500N		0893 7125 300	25
Isophonic Pipe Clamp M8+M10/315 W5	315	313-325	28x2			5,500Nm	2,500N		0893 7125 315	25
Isophonic Pipe Clamp M8+M10/350 W5	350	350-359	28x2			5,500Nm	2,500N		0893 7125 350	25
Isophonic Pipe Clamp M8+M10/400 W5	400	398-408	28x2			5,500Nm	2,500N		0893 7125 400	25
Isophonic Pipe Clamp M8+M10/500 W5	500	499-505	28x2			5,500Nm	2,500N		0893 7125 500	25

Clamp Screws

	Description	Screw	Material Quality	Article Number	Packaging Quantity
	Screw for Clamp M8x40/W1	M8x40	W1	0893 7101 084	100
	Screw for Clamp M8x60/W1	M8x60	W1	0893 7101 086	100
	Screw for Clamp M8x80/W1	M8x80	W1	0893 7101 088	100
	Screw for Clamp M10x50/W1	M10x50	W1	0893 7101 105	100
	Screw for Clamp M10x70/W1	M10x70	W1	0893 7101 107	100
	Screw for Clamp M8x50/W4	M8x50	W4	0893 7104 085	100
	Screw for Clamp M8x60/W4	M8x60	W4	0893 7104 086	100

Base With Nut

	Description	Nut	Material Quality	Article Number	Packaging Quantity
	Rectangular Base with Nut M8+M10/W5	M8+M10	W5	0893 7115 001	1

More Benefits

- Secure clamping mechanism for stable grip

NORMAFIX® Isophonic Pipe Clamp is part of a broad portfolio. Discover more!



NORMAFIX® Reinforced Pipe Clamp



NORMAFIX® U-Bolt Clamp



Do you have questions or require a personal consultation?

Feel free to contact our NORMA Team!

Visit our website for more information about our products: norma-connects.com

