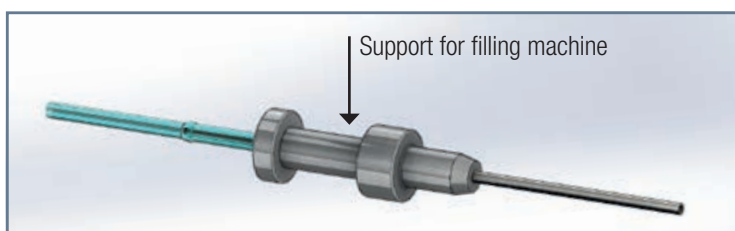


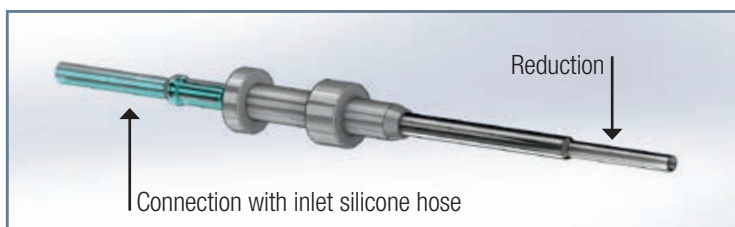
## CONN™ FILL

CONN™ FILL filling needles for aseptic processes are as flexible as your applications. CONN™ FILL needles exist in many sizes and designs for most of the aseptic filling machines on the market. They are available as disposable or re-usable needles.

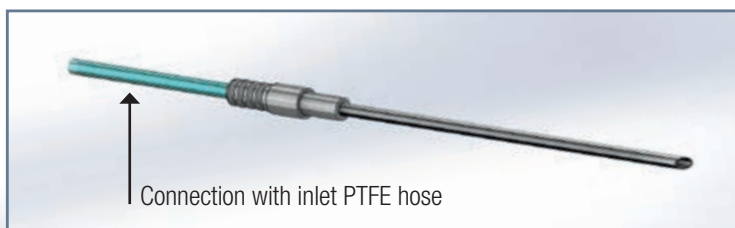
### CONN™ FILL for Standard Applications



### CONN™ FILL with Silicon Inlet Hose and Reduction

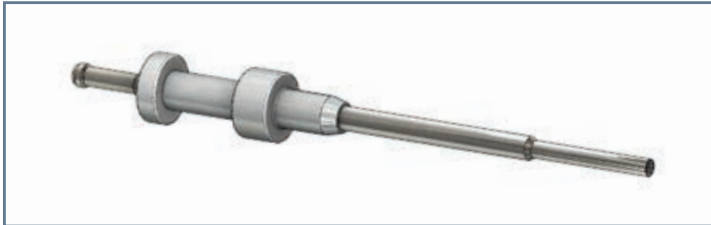


### CONN™ FILL for Special Application with Inlet PTFE Hose Glued



# CONN™ FILL

Filling solutions from Connectors that adapts to your needs.



Product group:	CONN™ FILL Filling Systems
Description:	Aseptic Filling Needles
Valid standards:	IMA, Bosch, Corima, B+S, and others
Internal diameter:	From Øi0.8mm till Øi10mm
Inlet hose:	Silicone or PTFE hose
Material:	Support: PVDF or PEEK Tube: 1.4435 or 1.4404 stainless steel
Type of Sterilization:	Compatible for autoclave or gamma-irradiation
Surface quality:	External roughness: 0.8µm or 1.6µm Internal roughness: 0.6µm or 0.8µm
Marking:	Size, Material, Batch-Number, Producer Code
Certificates:	Material certificate acc. EN 10204-3.1 Internal roughness certificate (optional)
Tolerances:	According to ISO 2768-f
Packaging:	Single or double bag
Option:	Pickling and/or passivation. Further dimensions on request available
Remarks:	Technical contents are subject to change

## Features and Benefits

- Ready-to-use, single-use or re-usable
- Autoclavable and gamma irradiatable
- Stainless steel needle with PVDF or PEEK support
- Straight needle with only one material in direct contact with media
- Easy integration in existing filling lines or systems possible
- Needle works drop-free and permits accurate volumetric filling\*
- Allows bottom up movement and high speed filling
- Laser marking possible and fully traceable

## Benefits for Disposable Configuration

- No cleaning verification or validation needed (CIP/SIP)
- Short changeover times leads to less machine downtime
- Minimisation of cross-contamination risks
- Simplified handling

\* Can depend on application and filling system

## CONNECTORS VERBINDUNGSTECHNIK AG

Zürcherstrasse 53 / Postfach  
CH-8317 Tagelswangen  
Switzerland

Tel. +41(0)52 354 68 68  
Fax +41(0)52 354 68 60